

\$499,900 - 42 Sonora Drive, St. Albert

MLS® #E4461483

\$499,900

5 Bedroom, 2.00 Bathroom, 1,178 sqft

Single Family on 0.00 Acres

Sturgeon Heights, St. Albert, AB

Beautifully Renovated Bungalow Backing Onto Park. This stunning renovated bungalow sits in an unbeatable location directly backing onto a park and within walking distance to all levels of schools, an indoor recreation centre with pool, and the brand-new outdoor arena right behind the home. Step inside to an open-concept main floor that connects the kitchen, dining, and living areas. The space features a gorgeous gas fireplace, top-quality upgraded flooring, and an abundance of natural light. There are 3 spacious bedrooms and a fully updated main bath. The fully finished lower level offers even more living space, including a large family room, a 4th bedroom, and a full bathroom perfect for guests or a growing family. Recent upgrades include a new furnace, hot water tank, deck, pergola, hot tub, bathroom, updated fireplace, 200-amp electrical service with a new panel, stainless steel fridge and stove, and more. The property also includes an oversized d/d garage. Pride of ownership shines through out.

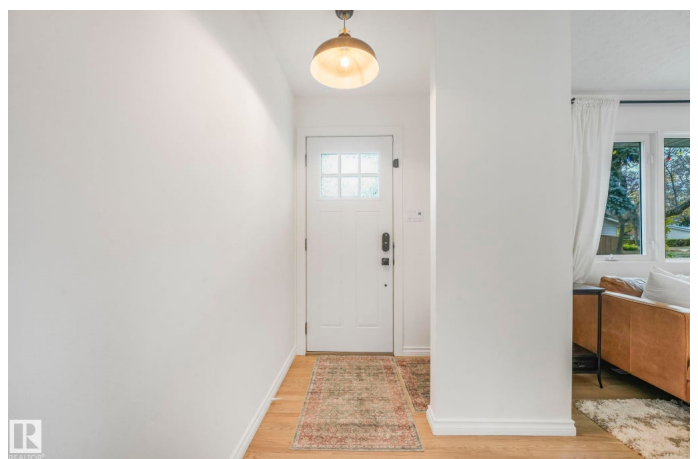
Built in 1963

Essential Information

MLS® # E4461483

Price \$499,900

Bedrooms 5



Bathrooms	2.00
Full Baths	2
Square Footage	1,178
Acres	0.00
Year Built	1963
Type	Single Family
Sub-Type	Detached Single Family
Style	Bungalow
Status	Active

Community Information

Address	42 Sonora Drive
Area	St. Albert
Subdivision	Sturgeon Heights
City	St. Albert
County	ALBERTA
Province	AB
Postal Code	T8N 0L5

Amenities

Amenities	Hot Tub, See Remarks
Parking	Double Garage Detached, Over Sized

Interior

Appliances	Alarm/Security System, Dishwasher-Built-In, Dryer, Garage Opener, Microwave Hood Fan, Refrigerator, Storage Shed, Stove-Electric, Washer, Window Coverings, Hot Tub
Heating	Forced Air-1, Natural Gas
Stories	2
Has Basement	Yes
Basement	Full, Finished

Exterior

Exterior	Wood, Stucco
Exterior Features	Landscaped, Park/Reserve, Playground Nearby, Private Setting, Schools, Shopping Nearby
Roof	Asphalt Shingles
Construction	Wood, Stucco
Foundation	Concrete Perimeter

Additional Information

Date Listed October 9th, 2025
Days on Market 1
Zoning Zone 24

DATA IS DEEMED RELIABLE BUT IS NOT GUARANTEED ACCURATE BY THE REALTORS® ASSOCIATION OF EDMONTON. COPYRIGHT 2025 BY THE REALTORS® ASSOCIATION OF EDMONTON. ALL RIGHTS RESERVED.Trademarks are owned or controlled by the Canadian Real Estate Association (CREA) and identify real estate professionals who are members of CREA (REALTOR®, REALTORS®) and/or the quality of services they provide (MLS®, Multiple Listing Service®)
Listing information last updated on October 10th, 2025 at 2:32pm MDT