

\$365,000 - 8811 130a Avenue, Edmonton

MLS® #E4458959

\$365,000

3 Bedroom, 1.00 Bathroom, 1,041 sqft
Single Family on 0.00 Acres

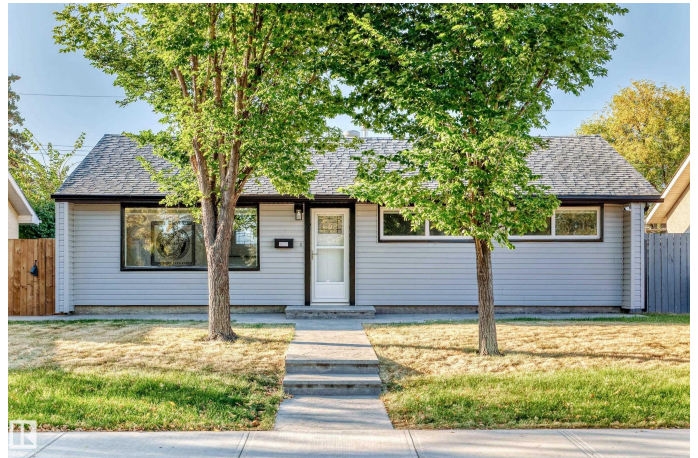
Killarney, Edmonton, AB

FLAWLESS! Over \$80,000 spent on RENOVATIONS ! This 3 bedroom basementless bungalow is truly a SHOWSTOPPER! Brand new kitchen , stainless steel appliances , granite countertops , Newer windows ,shingles, paint , baseboards, flooring , window coverings ,plumbing , BATHROOM and more !Large back yard which is fully fenced . GARAGE is HUGE and heated , and RV parking . Comes with New SATAMPED CONCRETE ! This entire home is truly a MASTERPIECE that is a must to view , Turn key home that shows a 10 ! WOW ! Expect to be IMPRESSED !

Built in 1958

Essential Information

MLS® #	E4458959
Price	\$365,000
Bedrooms	3
Bathrooms	1.00
Full Baths	1
Square Footage	1,041
Acres	0.00
Year Built	1958
Type	Single Family
Sub-Type	Detached Single Family
Style	Bungalow



Status	Active
--------	--------

Community Information

Address	8811 130a Avenue
Area	Edmonton
Subdivision	Killarney
City	Edmonton
County	ALBERTA
Province	AB
Postal Code	T5E 0V7

Amenities

Amenities	Deck, Detectors Smoke
Parking Spaces	6
Parking	Double Garage Detached, Heated, Over Sized

Interior

Appliances	Dishwasher-Built-In, Dryer, Garage Control, Garage Opener, Refrigerator, Storage Shed, Stove-Electric, Washer
Heating	Forced Air-1, Natural Gas
Fireplaces	Mantel
Stories	1
Has Basement	Yes
Basement	None, No Basement

Exterior

Exterior	Wood, Vinyl
Exterior Features	Back Lane, Fenced, Flat Site, Landscaped
Roof	Asphalt Shingles
Construction	Wood, Vinyl
Foundation	Concrete Perimeter

School Information

Middle	ST, Cecilia
High	O Leary

Additional Information

Date Listed	September 22nd, 2025
Zoning	Zone 02

DATA IS DEEMED RELIABLE BUT IS NOT GUARANTEED ACCURATE BY THE REALTORS® ASSOCIATION OF EDMONTON. COPYRIGHT 2025 BY THE REALTORS® ASSOCIATION OF EDMONTON. ALL RIGHTS RESERVED. Trademarks are owned or controlled by the Canadian Real Estate Association (CREA) and identify real estate professionals who are members of CREA (REALTOR®, REALTORS®) and/or the quality of services they provide (MLS®, Multiple Listing Service®)

Listing information last updated on September 23rd, 2025 at 7:32am MDT