

\$516,900 - 5241 47 Avenue, Calmar

MLS® #E4458460

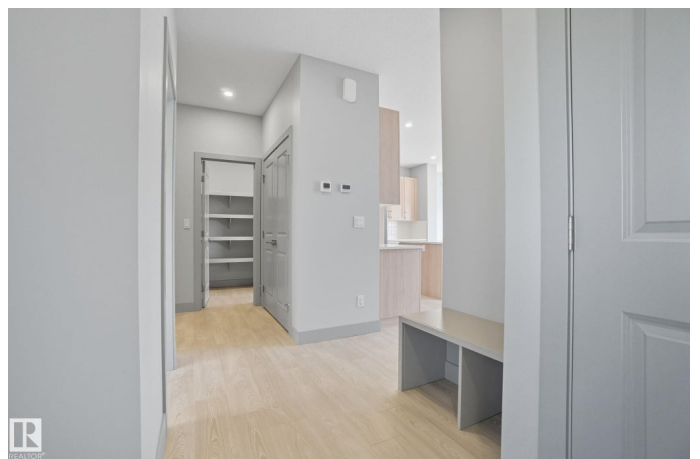
\$516,900

3 Bedroom, 2.50 Bathroom, 2,110 sqft

Single Family on 0.00 Acres

Calmar, Calmar, AB

Welcome to this magnificent SOUTH BACKING home in the upcoming Community of Soubridge Crossing in Calmar with over 1800sqft of living space and UPGRADED finishes. As you enter, you will be greeted by a DEN/FLEX room that leads you to a bright OPEN TO BELOW living room abundant with natural light. The kitchen layout boasts elegant QUARTZ COUNTERTOPS, ample cabinet space, STAINLESS STEEL appliances which leads you to a WALKTHROUGH PANTRY. Relax by the electric FIREPLACE and entertain guests in this open concept layout. The 2 piece bathroom compliments the main floor. On the 2nd floor, you will be greeted by the CENTRAL BONUS ROOM, 3 large bedrooms, one 5-PC ENSUITE BATHROOM, additional 4-PC bathroom and laundry room. The MASTER BEDROOOM features a 5-pc ENSUITE including a tub, shower and a WALK-IN CLOSET. Enjoy an EXTENDED DOUBLE GARAGE featuring a 16x8 GARAGE DOOR to fit a larger car and RV outside. The basement is waiting for your creative touch. This home is walking distance to the baseball diamonds!



Built in 2025

Essential Information

MLS® #

E4458460

Price	\$516,900
Bedrooms	3
Bathrooms	2.50
Full Baths	2
Half Baths	1
Square Footage	2,110
Acres	0.00
Year Built	2025
Type	Single Family
Sub-Type	Detached Single Family
Style	2 Storey
Status	Active

Community Information

Address	5241 47 Avenue
Area	Calmar
Subdivision	Calmar
City	Calmar
County	ALBERTA
Province	AB
Postal Code	T0C 0V0

Amenities

Amenities	R.V. Storage, See Remarks
Parking	Double Garage Attached

Interior

Interior Features	ensuite bathroom
Appliances	Dishwasher-Built-In, Dryer, Garage Control, Garage Opener, Microwave Hood Fan, Refrigerator, Washer, See Remarks
Heating	Forced Air-1, Natural Gas
Fireplace	Yes
Fireplaces	Insert
Stories	2
Has Basement	Yes
Basement	Full, Unfinished

Exterior

Exterior	Wood, Stone, Vinyl
----------	--------------------

Exterior Features	Airport Nearby, Flat Site, Park/Reserve, Playground Nearby, Schools, Shopping Nearby, See Remarks
Roof	Asphalt Shingles
Construction	Wood, Stone, Vinyl
Foundation	Concrete Perimeter

Additional Information

Date Listed	September 17th, 2025
Days on Market	2
Zoning	Zone 92

DATA IS DEEMED RELIABLE BUT IS NOT GUARANTEED ACCURATE BY THE REALTORS® ASSOCIATION OF EDMONTON. COPYRIGHT 2025 BY THE REALTORS® ASSOCIATION OF EDMONTON. ALL RIGHTS RESERVED.Trademarks are owned or controlled by the Canadian Real Estate Association (CREA) and identify real estate professionals who are members of CREA (REALTOR®, REALTORS®) and/or the quality of services they provide (MLS®, Multiple Listing Service®)

Listing information last updated on September 19th, 2025 at 1:32am MDT