

## \$429,000 - 30 Lorraine Crescent, St. Albert

MLS® #E4451310

**\$429,000**

4 Bedroom, 2.00 Bathroom, 1,110 sqft

Single Family on 0.00 Acres

Lacombe Park, St. Albert, AB

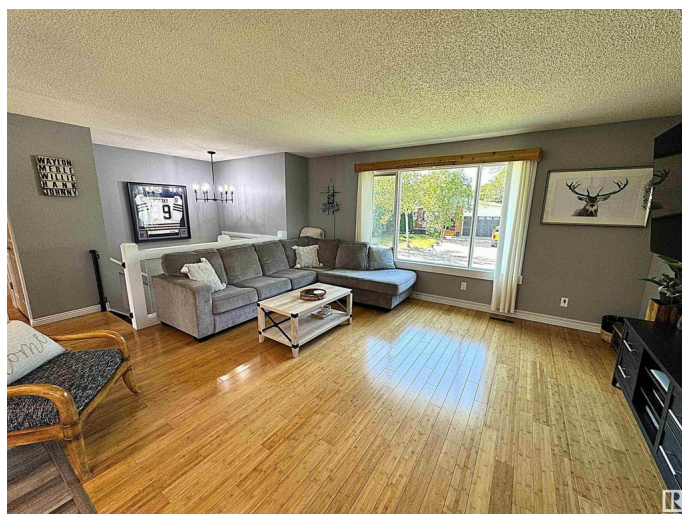
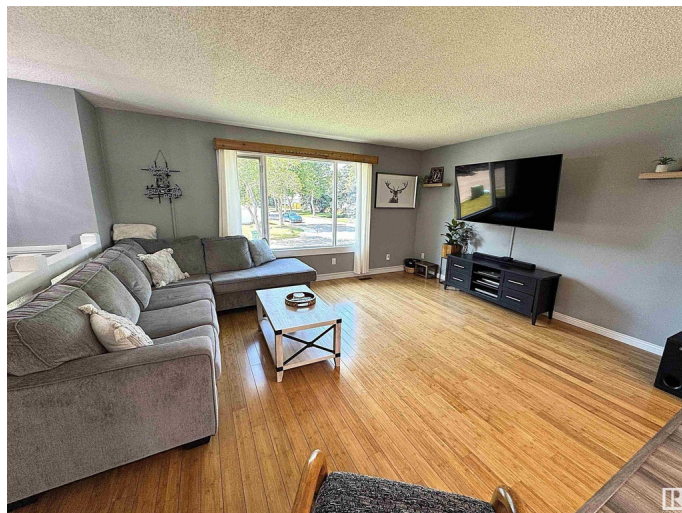
Bright, beautiful and open 2+2 bedroom bi-level located on a quiet street in Lacombe Park in St. Albert! This 1,100 sq/ft home boasts recently upgraded shingles on the house and garage, renovated kitchen including newer stainless steel appliances and gas stove, flooring, and upgraded main floor bath! Spacious bedrooms, custom wall detailing, big basement windows and all situated on a large lot with an approximately 26'x26' garage including lengthy concrete driveway, this family home is definitely a must see!

Built in 1975

### Essential Information

MLS® #	E4451310
Price	\$429,000
Bedrooms	4
Bathrooms	2.00
Full Baths	2
Square Footage	1,110
Acres	0.00
Year Built	1975
Type	Single Family
Sub-Type	Detached Single Family
Style	Bi-Level
Status	Active

### Community Information



Address	30 Lorraine Crescent
Area	St. Albert
Subdivision	Lacombe Park
City	St. Albert
County	ALBERTA
Province	AB
Postal Code	T8N 2R3

### **Amenities**

Amenities	Deck, See Remarks
Parking Spaces	4
Parking	220 Volt Wiring, Double Garage Detached, Insulated, Over Sized

### **Interior**

Appliances	Dryer, Garage Opener, Refrigerator, Stove-Electric, Washer, Window Coverings
Heating	Forced Air-1, Natural Gas
Stories	1
Has Basement	Yes
Basement	Full, See Remarks

### **Exterior**

Exterior	Wood, Stucco, Vinyl
Exterior Features	Corner Lot, Cul-De-Sac, Fenced, Landscaped, No Back Lane, Playground Nearby, Public Transportation, Schools, Shopping Nearby, Treed Lot, See Remarks
Roof	Asphalt Shingles
Construction	Wood, Stucco, Vinyl
Foundation	Concrete Perimeter

### **Additional Information**

Date Listed	August 5th, 2025
Days on Market	2
Zoning	Zone 24

DATA IS DEEMED RELIABLE BUT IS NOT GUARANTEED ACCURATE BY THE REALTORS® ASSOCIATION OF EDMONTON. COPYRIGHT 2025 BY THE REALTORS® ASSOCIATION OF EDMONTON. ALL RIGHTS RESERVED. Trademarks are owned or controlled by the Canadian Real Estate Association (CREA) and identify real estate professionals who are members of CREA (REALTOR®, REALTORS®) and/or the quality of services they provide (MLS®, Multiple Listing Service®)

Listing information last updated on August 7th, 2025 at 9:32am MDT