

Courtesy Of Lenny C Burt Of MaxWell Progressive

\$485,000 - 12212 151 Avenue, Edmonton

MLS® #E4450717

\$485,000

4 Bedroom, 2.50 Bathroom, 1,373 sqft

Single Family on 0.00 Acres

Caernarvon, Edmonton, AB

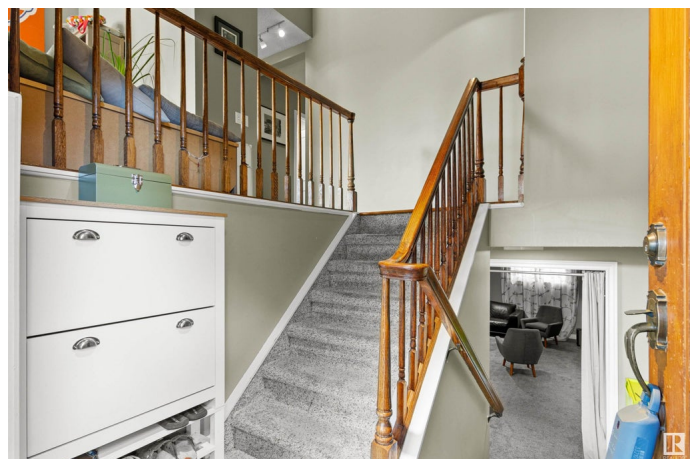
This upgraded bi-level blends timeless mid-century design with modern comfort. The dramatic vaulted ceilings and skylight flood the main floor with natural light, giving the living and dining areas an airy, inviting feel. Hardwood, tile, upgraded broadloom, and a stone-faced fireplace add warmth and character throughout. The kitchen is a standout with granite counters, soft-close stained cabinetry, and upgraded appliances. Triple-pane windows and neutral paint complement the wide trim and baseboards. Upstairs features three bedrooms, including a rare 4-piece ensuite for this era, plus another full bath. The finished basement offers a spacious family room, extra bedroom, laundry, and newer carpets. Outside, enjoy a beautiful yard, fenced with a large deck, ideal for entertaining. The insulated double garage with floor drain and direct basement access adds everyday convenience. Located close to schools, shopping, parks, and amenities, this home balances style and practicality in a great neighborhood.

Built in 1978

Essential Information

MLS® # E4450717

Price \$485,000



Bedrooms	4
Bathrooms	2.50
Full Baths	2
Half Baths	1
Square Footage	1,373
Acres	0.00
Year Built	1978
Type	Single Family
Sub-Type	Detached Single Family
Style	Bi-Level
Status	Active

Community Information

Address	12212 151 Avenue
Area	Edmonton
Subdivision	Caernarvon
City	Edmonton
County	ALBERTA
Province	AB
Postal Code	T5X 4A6

Amenities

Amenities	Deck, Vaulted Ceiling
Parking	Double Garage Attached

Interior

Interior Features	ensuite bathroom
Appliances	Dishwasher-Built-In, Dryer, Refrigerator, Stove-Electric, Washer, Window Coverings
Heating	Forced Air-1, Natural Gas
Stories	2
Has Basement	Yes
Basement	Full, Finished

Exterior

Exterior	Wood
Exterior Features	Fenced, Landscaped, Schools
Roof	Asphalt Shingles
Construction	Wood

Foundation Concrete Perimeter

Additional Information

Date Listed August 1st, 2025

Days on Market 1

Zoning Zone 27

DATA IS DEEMED RELIABLE BUT IS NOT GUARANTEED ACCURATE BY THE REALTORS® ASSOCIATION OF EDMONTON. COPYRIGHT 2025 BY THE REALTORS® ASSOCIATION OF EDMONTON. ALL RIGHTS RESERVED.Trademarks are owned or controlled by the Canadian Real Estate Association (CREA) and identify real estate professionals who are members of CREA (REALTOR®, REALTORS®) and/or the quality of services they provide (MLS®, Multiple Listing Service®)

Listing information last updated on August 2nd, 2025 at 6:17am MDT