

## \$409,000 - 80 Virginia Crescent, Sherwood Park

MLS® #E4449818

**\$409,000**

4 Bedroom, 2.50 Bathroom, 1,572 sqft

Single Family on 0.00 Acres

Village on the Lake, Sherwood Park, AB

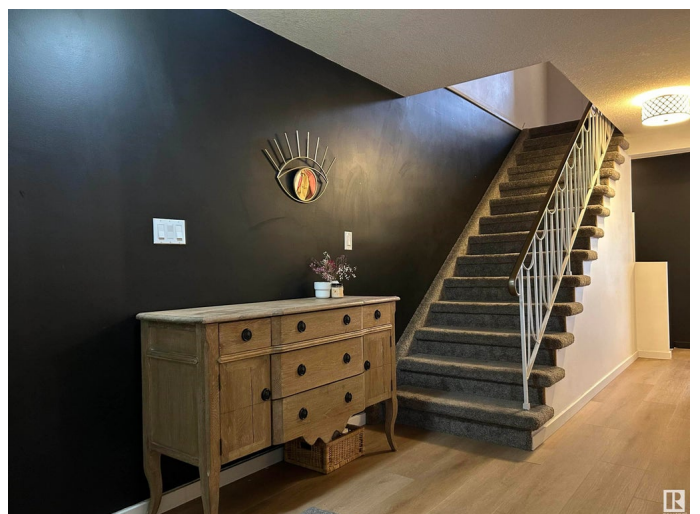
Welcome to this well cared for, inviting family home. The spacious, open main floor has a large living space with light pouring in the big south facing windows. Neutral, modern paint choices allow for whatever design style you may choose. The kitchen has been renovated to provide ample storage and tons of counter space with room for a larger dining table. Located off the kitchen, the patio doors lead to a big deck, hot tub and large private yard which boasts a firepit area, 10x10 storage shed and play structure. The hot tub is regularly maintained and has just been cleaned, refilled and is ready to soak in. Finishing off the main floor is a two piece bath and laundry. The washer and dryer are brand new. The main floor has new (2024), professionally installed luxury vinyl plank flooring. Upstairs has newer carpet (2022), an oversized primary bedroom with upgraded three piece bath and a closet with built in professionally installed closet organizer. Two other good sized bedrooms and a four piece bath comple

Built in 1981

### Essential Information

MLS® # E4449818

Price \$409,000



Bedrooms	4
Bathrooms	2.50
Full Baths	2
Half Baths	1
Square Footage	1,572
Acres	0.00
Year Built	1981
Type	Single Family
Sub-Type	Detached Single Family
Style	2 Storey
Status	Active

### Community Information

Address	80 Virginia Crescent
Area	Sherwood Park
Subdivision	Village on the Lake
City	Sherwood Park
County	ALBERTA
Province	AB
Postal Code	T8A 4L5

### Amenities

Amenities	Hot Tub
Parking	No Garage

### Interior

Interior Features	ensuite bathroom
Appliances	Dishwasher-Built-In, Dryer, Refrigerator, Stove-Electric, Washer, Hot Tub
Heating	Forced Air-1, Natural Gas
Stories	3
Has Basement	Yes
Basement	Full, Finished

### Exterior

Exterior	Wood, Vinyl
Exterior Features	Fenced, Flat Site, Landscaped, Public Transportation
Roof	Asphalt Shingles
Construction	Wood, Vinyl

Foundation                      Concrete Perimeter

**Additional Information**

Date Listed                      July 25th, 2025

Days on Market                4

Zoning                            Zone 25

DATA IS DEEMED RELIABLE BUT IS NOT GUARANTEED ACCURATE BY THE REALTORS® ASSOCIATION OF EDMONTON. COPYRIGHT 2025 BY THE REALTORS® ASSOCIATION OF EDMONTON. ALL RIGHTS RESERVED.Trademarks are owned or controlled by the Canadian Real Estate Association (CREA) and identify real estate professionals who are members of CREA (REALTOR®, REALTORS®) and/or the quality of services they provide (MLS®, Multiple Listing Service®)

Listing information last updated on July 29th, 2025 at 9:31am MDT