

\$399,000 - 4215-43 Avenue, Rural Lac Ste. Anne County

MLS® #E4446453

\$399,000

4 Bedroom, 3.00 Bathroom, 2,040 sqft

Rural on 0.22 Acres

Alberta Beach, Rural Lac Ste. Anne County,
AB

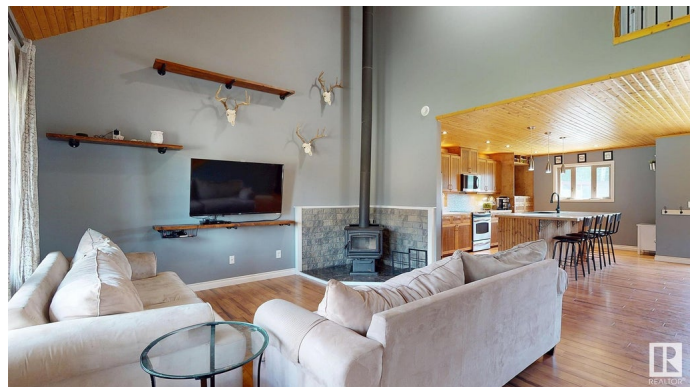
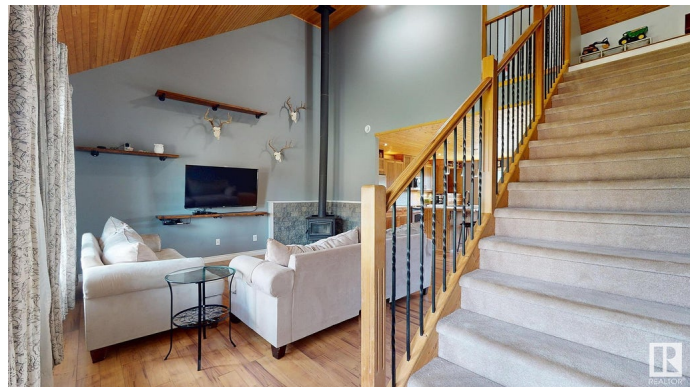
WELCOME TO THIS GORGEOUS 4

Bedroom, 3 bathroom home backing onto green space, trees and walking distance to Grasmere School!!! This well designed home offers vaulted ceilings, open concept living, a large kitchen and dining space, main floor primary bedroom with full ensuite, IN-FLOOR HEAT, a FANTASTIC FLEX SPACE with an abundance of storage hidden and tucked away in the upper level. The DOUBLE ATTACHED GARAGE IS FULLY FINISHED AND HEATED!!! This home sits on a huge lot in a cul de sac with an abundance of parking. Minutes from the the GOLF COURSE and trail system... Super close to lake where one can enjoy boating, fishing, swimming and so much more that the WONDERFUL village of ALBERTA BEACH has to offer!!!

Built in 2008

Essential Information

MLS® #	E4446453
Price	\$399,000
Bedrooms	4
Bathrooms	3.00
Full Baths	3
Square Footage	2,040
Acres	0.22



Year Built	2008
Type	Rural
Sub-Type	Detached Single Family
Style	2 Storey
Status	Active

Community Information

Address	4215-43 Avenue
Area	Rural Lac Ste. Anne County
Subdivision	Alberta Beach
City	Rural Lac Ste. Anne County
County	ALBERTA
Province	AB
Postal Code	T0E 0A0

Amenities

Features	Carbon Monoxide Detectors, Closet Organizers, Deck, Detectors Smoke, Exterior Walls- 2"x6", Front Porch, Hot Water Natural Gas, No Smoking Home, Vaulted Ceiling, Vinyl Windows
----------	---

Interior

Interior Features	ensuite bathroom
Heating	In Floor Heat System, Natural Gas
Fireplace	Yes
Stories	2
Has Basement	Yes
Basement	None, No Basement

Exterior

Exterior	Wood
Exterior Features	Backs Onto Park/Trees, Boating, Cul-De-Sac, Fenced, Flat Site, Golf Nearby, Landscaped, No Back Lane, No Through Road, Paved Lane, Playground Nearby, Schools, Shopping Nearby
Construction	Wood
Foundation	Slab

Additional Information

Date Listed	July 8th, 2025
Days on Market	3
Zoning	Zone 71

DATA IS DEEMED RELIABLE BUT IS NOT GUARANTEED ACCURATE BY THE REALTORS® ASSOCIATION OF EDMONTON. COPYRIGHT 2025 BY THE REALTORS® ASSOCIATION OF EDMONTON. ALL RIGHTS RESERVED.Trademarks are owned or controlled by the Canadian Real Estate Association (CREA) and identify real estate professionals who are members of CREA (REALTOR®, REALTORS®) and/or the quality of services they provide (MLS®, Multiple Listing Service®)

Listing information last updated on July 11th, 2025 at 6:02pm MDT