

# \$579,900 - 41 Meadowgrove Lane, Spruce Grove

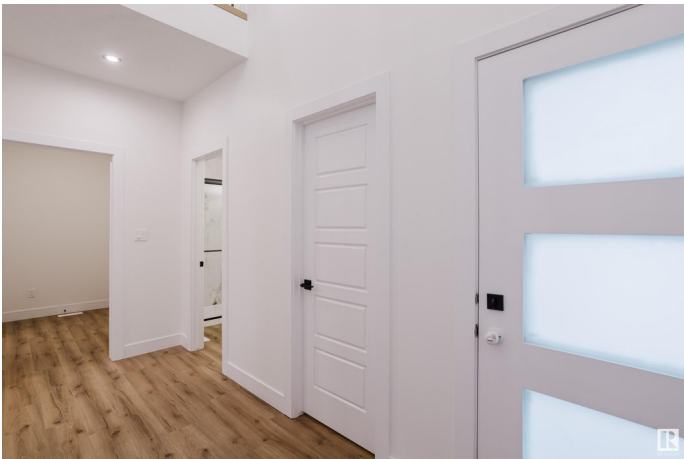
MLS® #E4446036

**\$579,900**

3 Bedroom, 3.00 Bathroom, 2,191 sqft  
Single Family on 0.00 Acres

McLaughlin\_SPGR, Spruce Grove, AB

Welcome to the stunning Kismet model, ideally located in the desirable community of McLaughlin! This thoughtfully designed home greets you with soaring open-to-above ceilings and an abundance of natural light that creates an airy, welcoming atmosphere. The main floor features a spacious walk-in coat closet, a full bathroom, and a versatile den perfect for a home office or guest room. A beautifully appointed kitchen with a central island flows seamlessly into the open-concept living and dining area, while a separate spice kitchen offers added convenience for everyday cooking or entertaining. Upstairs, youâ€™ll find two generously sized bedrooms and a luxurious primary suite complete with a spa-inspired 5-piece ensuite and walk-in closet. The unfinished basement includes a separate side entrance. With elegant finishes, a functional layout, and incredible flexibility, the Kismet model offers the perfect blend of comfort, style, and location.



Built in 2025

## Essential Information

MLS® #	E4446036
Price	\$579,900
Bedrooms	3
Bathrooms	3.00

Full Baths	3
Square Footage	2,191
Acres	0.00
Year Built	2025
Type	Single Family
Sub-Type	Detached Single Family
Style	2 Storey
Status	Active

### **Community Information**

Address	41 Meadowgrove Lane
Area	Spruce Grove
Subdivision	McLaughlin_SPGR
City	Spruce Grove
County	ALBERTA
Province	AB
Postal Code	T7X 0W2

### **Amenities**

Amenities	Ceiling 9 ft., Closet Organizers, Exterior Walls- 2"x6", Hot Water Tankless, No Animal Home, No Smoking Home, Vinyl Windows
Parking	Double Garage Attached

### **Interior**

Interior Features	ensuite bathroom
Appliances	Garage Control, Garage Opener, Hood Fan
Heating	Forced Air-1, Natural Gas
Fireplace	Yes
Fireplaces	Remote Control
Stories	2
Has Basement	Yes
Basement	Full, Unfinished

### **Exterior**

Exterior	Wood, Stone, Vinyl
Exterior Features	Playground Nearby, Schools, Shopping Nearby
Roof	Asphalt Shingles
Construction	Wood, Stone, Vinyl
Foundation	Concrete Perimeter

**Additional Information**

Date Listed                July 3rd, 2025  
Days on Market        8  
Zoning                    Zone 91

DATA IS DEEMED RELIABLE BUT IS NOT GUARANTEED ACCURATE BY THE REALTORS® ASSOCIATION OF EDMONTON. COPYRIGHT 2025 BY THE REALTORS® ASSOCIATION OF EDMONTON. ALL RIGHTS RESERVED.Trademarks are owned or controlled by the Canadian Real Estate Association (CREA) and identify real estate professionals who are members of CREA (REALTOR®, REALTORS®) and/or the quality of services they provide (MLS®, Multiple Listing Service®)  
Listing information last updated on July 10th, 2025 at 11:02pm MDT