

\$549,000 - 11 Labelle Crescent, St. Albert

MLS® #E4445823

\$549,000

6 Bedroom, 3.00 Bathroom, 1,207 sqft
Single Family on 0.00 Acres

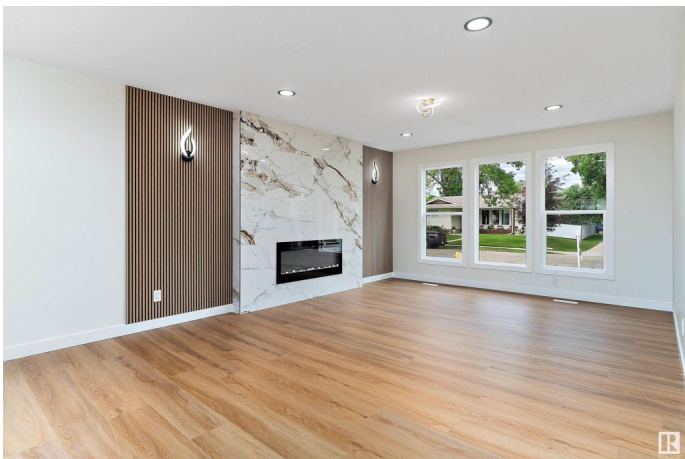
Lacombe Park, St. Albert, AB

Welcome to this stunning single-family home, fully renovated from top to bottom in the heart of St. Albert. Boasting 6 Bedrooms, 3 full bathrooms, and 2 modern kitchens with Brand new appliances, this home offers the perfect blend of style, space, and convenience. Every detail has been updated – including new windows, new siding, new plumbing, new electrical, Fully Landscaped, stylish feature wall with modern electric fireplace, and modern finishes throughout. Don't forget new double detached garage, plus a concrete pad with parking for 5 additional vehicles. Located in a prime location, close to schools, shopping, transit, and all major amenities, this move-in-ready home offers both comfort and exceptional value. A rare find in one of St. Albert’s most desirable areas!

Built in 1974

Essential Information

| | |
|----------------|-----------|
| MLS® # | E4445823 |
| Price | \$549,000 |
| Bedrooms | 6 |
| Bathrooms | 3.00 |
| Full Baths | 3 |
| Square Footage | 1,207 |
| Acres | 0.00 |
| Year Built | 1974 |



| | |
|----------|------------------------|
| Type | Single Family |
| Sub-Type | Detached Single Family |
| Style | Bungalow |
| Status | Active |

Community Information

| | |
|-------------|---------------------|
| Address | 11 Labelle Crescent |
| Area | St. Albert |
| Subdivision | Lacombe Park |
| City | St. Albert |
| County | ALBERTA |
| Province | AB |
| Postal Code | T8N 2G6 |

Amenities

| | |
|-----------|--|
| Amenities | Detectors Smoke, No Animal Home, No Smoking Home, Parking-Extra, See Remarks |
| Parking | Double Garage Detached |

Interior

| | |
|-------------------|--|
| Interior Features | ensuite bathroom |
| Appliances | Dishwasher-Built-In, Dryer, Garage Opener, Microwave Hood Fan, Washer, Refrigerators-Two, Stoves-Two, Dishwasher-Two |
| Heating | Forced Air-1, Natural Gas |
| Stories | 2 |
| Has Suite | Yes |
| Has Basement | Yes |
| Basement | Full, Finished |

Exterior

| | |
|-------------------|--|
| Exterior | Wood, Vinyl |
| Exterior Features | Fenced, Flat Site, Golf Nearby, Landscaped, No Back Lane, Playground Nearby, See Remarks |
| Roof | Asphalt Shingles |
| Construction | Wood, Vinyl |
| Foundation | Concrete Perimeter |

Additional Information

| | |
|----------------|----------------|
| Date Listed | July 4th, 2025 |
| Days on Market | 6 |

Zoning

Zone 24

DATA IS DEEMED RELIABLE BUT IS NOT GUARANTEED ACCURATE BY THE REALTORS® ASSOCIATION OF EDMONTON. COPYRIGHT 2025 BY THE REALTORS® ASSOCIATION OF EDMONTON. ALL RIGHTS RESERVED. Trademarks are owned or controlled by the Canadian Real Estate Association (CREA) and identify real estate professionals who are members of CREA (REALTOR®, REALTORS®) and/or the quality of services they provide (MLS®, Multiple Listing Service®)

Listing information last updated on July 10th, 2025 at 2:18pm MDT