

\$497,029 - 4276 Summerland Drive, Sherwood Park

MLS® #E4445217

\$497,029

3 Bedroom, 2.50 Bathroom, 1,593 sqft
Single Family on 0.00 Acres

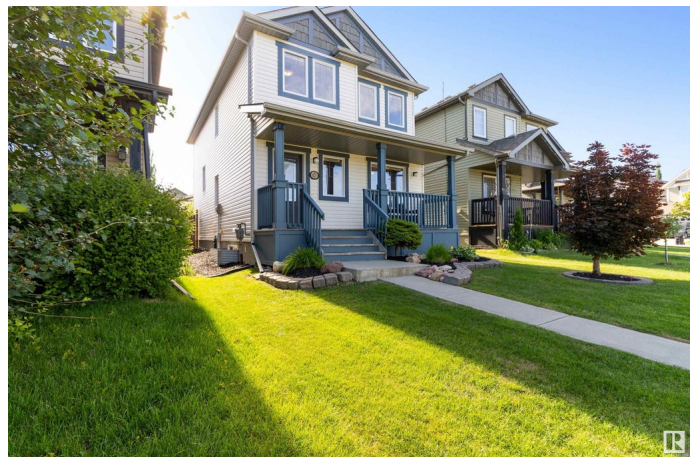
Summerwood, Sherwood Park, AB

Stunning 1593 sq ft 2 story in popular Summerwood! Lovely landscaped yard leads to an inviting covered veranda. Open floor plan with a huge great room featuring gas fireplace with stately mantle. Abundance of espresso maple cabinets in extended kitchen with huge island & eating bar plus SS appls & ceramic backsplash. Bright sunny dinette with oversized windows overlooking yard. 2 pc powder room completes the main floor. Upstairs are 3 spacious bedrooms including a king size primary bd with full 4 pc ensuite & walk-in closet. 9' ceilings on main and impressive 2nd floor vaulted ceiling complement the contemporary plan. Laundry was moved from 2nd floor to bsmt but still exists and could easily be restored. Upgrades include luxury vinyl plank flooring, newer 5" baseboards, fresh paint, updated fixtures & high efficiency furnace with central AC. Low maintenance yard with large exposed aggregate patio & walks. Double garage is insulated & boarded with a 8' overhead door & a large vinyl window to yard.

Built in 2011

Essential Information

MLS® #	E4445217
Price	\$497,029



Bedrooms	3
Bathrooms	2.50
Full Baths	2
Half Baths	1
Square Footage	1,593
Acres	0.00
Year Built	2011
Type	Single Family
Sub-Type	Detached Single Family
Style	2 Storey
Status	Active

Community Information

Address	4276 Summerland Drive
Area	Sherwood Park
Subdivision	Summerwood
City	Sherwood Park
County	ALBERTA
Province	AB
Postal Code	T8H 0K4

Amenities

Amenities	Deck, Smart/Program. Thermostat, Vaulted Ceiling
Parking	Double Garage Detached

Interior

Interior Features	ensuite bathroom
Appliances	Dishwasher-Built-In, Dryer, Freezer, Garage Control, Garage Opener, Microwave Hood Fan, Refrigerator, Stove-Electric, Washer, Window Coverings
Heating	Forced Air-1, Natural Gas
Fireplace	Yes
Fireplaces	Mantel, Tile Surround
Stories	2
Has Basement	Yes
Basement	Full, Unfinished

Exterior

Exterior	Wood, Vinyl
----------	-------------

Exterior Features	Back Lane, Fenced, Golf Nearby, Landscaped, Park/Reserve, Playground Nearby, Public Transportation, Schools, Shopping Nearby
Roof	Asphalt Shingles
Construction	Wood, Vinyl
Foundation	Concrete Perimeter

Additional Information

Date Listed	July 1st, 2025
Days on Market	8
Zoning	Zone 25

DATA IS DEEMED RELIABLE BUT IS NOT GUARANTEED ACCURATE BY THE REALTORS® ASSOCIATION OF EDMONTON. COPYRIGHT 2025 BY THE REALTORS® ASSOCIATION OF EDMONTON. ALL RIGHTS RESERVED.Trademarks are owned or controlled by the Canadian Real Estate Association (CREA) and identify real estate professionals who are members of CREA (REALTOR®, REALTORS®) and/or the quality of services they provide (MLS®, Multiple Listing Service®)

Listing information last updated on July 9th, 2025 at 5:17am MDT