

\$500,000 - 2 Haythorne Crescent, Sherwood Park

MLS® #E4444510

\$500,000

5 Bedroom, 3.00 Bathroom, 1,173 sqft

Single Family on 0.00 Acres

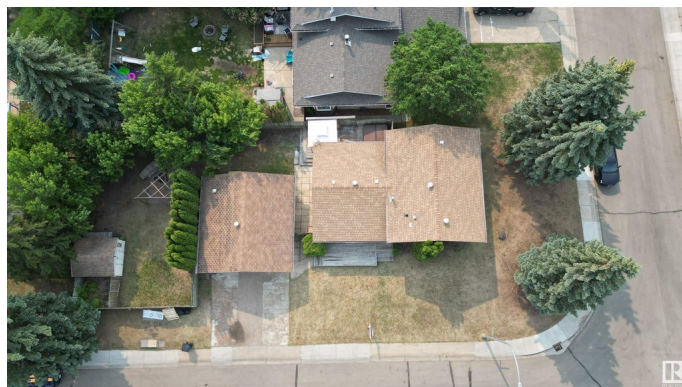
Woodbridge Farms, Sherwood Park, AB

Welcome to this beautifully renovated 4-level split in the heart of family-friendly Woodbridge Farms! Offering close to 2200 sq.ft. of total living space, this 5-bedroom, 3-bath home has been extensively updated since 2018. Enjoy a modern kitchen with ample cabinet space, new vinyl plank and carpet throughout, nearly all new windows, fresh paint, updated lighting, and renovated bathrooms including a 3pc ensuite. The spacious layout includes a bright living room, huge family room with gas fireplace, and a fully finished basement with 2 bedrooms, a den, and full bath. Outside, the massive backyard is ideal for entertaining with a deck, firepit, and plenty of space to play. An oversized double detached garage adds convenience. Surrounded by schools, parks, and playgrounds—this is the ultimate move-in-ready family home in Sherwood Park!

Built in 1979

Essential Information

MLS® #	E4444510
Price	\$500,000
Bedrooms	5
Bathrooms	3.00
Full Baths	3
Square Footage	1,173
Acres	0.00



Year Built	1979
Type	Single Family
Sub-Type	Detached Single Family
Style	4 Level Split
Status	Active

Community Information

Address	2 Haythorne Crescent
Area	Sherwood Park
Subdivision	Woodbridge Farms
City	Sherwood Park
County	ALBERTA
Province	AB
Postal Code	T8A 3Z8

Amenities

Amenities	Deck, Patio
Parking Spaces	4
Parking	Double Garage Attached

Interior

Interior Features	ensuite bathroom
Appliances	Dishwasher-Built-In, Dryer, Microwave Hood Fan, Refrigerator, Stove-Electric, Washer
Heating	Forced Air-1, Natural Gas
Stories	4
Has Basement	Yes
Basement	Full, Finished

Exterior

Exterior	Wood, Metal
Exterior Features	Corner Lot, Fenced, Park/Reserve, Picnic Area, Playground Nearby, Public Transportation, Schools, Shopping Nearby
Roof	Asphalt Shingles
Construction	Wood, Metal
Foundation	Concrete Perimeter

School Information

Elementary	Westboro Elementary
------------	---------------------

Middle	Sherwood Heights Junior
High	Salisbury Composite High

Additional Information

Date Listed	June 26th, 2025
Days on Market	8
Zoning	Zone 25

DATA IS DEEMED RELIABLE BUT IS NOT GUARANTEED ACCURATE BY THE REALTORS® ASSOCIATION OF EDMONTON. COPYRIGHT 2025 BY THE REALTORS® ASSOCIATION OF EDMONTON. ALL RIGHTS RESERVED. Trademarks are owned or controlled by the Canadian Real Estate Association (CREA) and identify real estate professionals who are members of CREA (REALTOR®, REALTORS®) and/or the quality of services they provide (MLS®, Multiple Listing Service®)

Listing information last updated on July 4th, 2025 at 8:47am MDT