

\$425,000 - 68 South Creek Wynd, Stony Plain

MLS® #E4444390

\$425,000

3 Bedroom, 3.50 Bathroom, 1,572 sqft

Single Family on 0.00 Acres

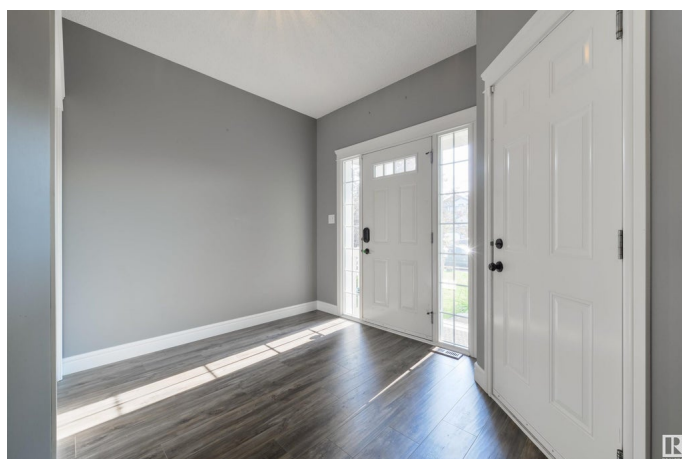
South Creek, Stony Plain, AB

NO REAR NEIGHBOURS & WEST-FACING VIEWS! Situated in the desirable South Creek community, this beautifully updated half duplex offers the perfect blend of comfort and convenience. Youâ€™ll love the bright & open main floor featuring stylish vinyl plank flooring, a modern kitchen with white cabinetry, center island, corner pantry, and spacious dinette, and a cozy living room with a gas fireplace. Upstairs showcases 3 generous-sized bedrooms including a king-sized ownerâ€™s suite with French doors, walk-in closet, and 4pc ensuite, as well as convenient top-floor laundry. The fully finished basement adds even more living space, while central A/C keeps you cool year-round. Outside, youâ€™ll find the yard is fully landscaped & fenced, with a full-width deck, and a peaceful TREED backdrop! Just steps from scenic walking trails, parks, and the Stony Plain Golf Course, the location here is tough to beat!

Built in 2013

Essential Information

MLS® #	E4444390
Price	\$425,000
Bedrooms	3
Bathrooms	3.50
Full Baths	3



Half Baths	1
Square Footage	1,572
Acres	0.00
Year Built	2013
Type	Single Family
Sub-Type	Half Duplex
Style	2 Storey
Status	Active

Community Information

Address	68 South Creek Wynd
Area	Stony Plain
Subdivision	South Creek
City	Stony Plain
County	ALBERTA
Province	AB
Postal Code	T7Z 0E1

Amenities

Amenities	Air Conditioner, Deck, No Animal Home, No Smoking Home, See Remarks
Parking	Single Garage Attached

Interior

Interior Features	ensuite bathroom
Appliances	Dishwasher-Built-In, Dryer, Garage Control, Garage Opener, Hood Fan, Refrigerator, Storage Shed, Stove-Electric, Washer, Window Coverings
Heating	Forced Air-1, Natural Gas
Fireplace	Yes
Fireplaces	See Remarks
Stories	3
Has Basement	Yes
Basement	Full, Finished

Exterior

Exterior	Wood, Vinyl
Exterior Features	Backs Onto Park/Trees, Fenced, Flat Site, Golf Nearby, Landscaped, Playground Nearby, Schools, Shopping Nearby, See Remarks
Roof	Asphalt Shingles

Construction	Wood, Vinyl
Foundation	Concrete Perimeter

Additional Information

Date Listed	June 26th, 2025
Days on Market	13
Zoning	Zone 91

DATA IS DEEMED RELIABLE BUT IS NOT GUARANTEED ACCURATE BY THE REALTORS® ASSOCIATION OF EDMONTON. COPYRIGHT 2025 BY THE REALTORS® ASSOCIATION OF EDMONTON. ALL RIGHTS RESERVED.Trademarks are owned or controlled by the Canadian Real Estate Association (CREA) and identify real estate professionals who are members of CREA (REALTOR®, REALTORS®) and/or the quality of services they provide (MLS®, Multiple Listing Service®)

Listing information last updated on July 8th, 2025 at 10:02pm MDT