

\$539,900 - 28 Springhaven Close, Spruce Grove

MLS® #E4444306

\$539,900

3 Bedroom, 3.50 Bathroom, 1,770 sqft

Single Family on 0.00 Acres

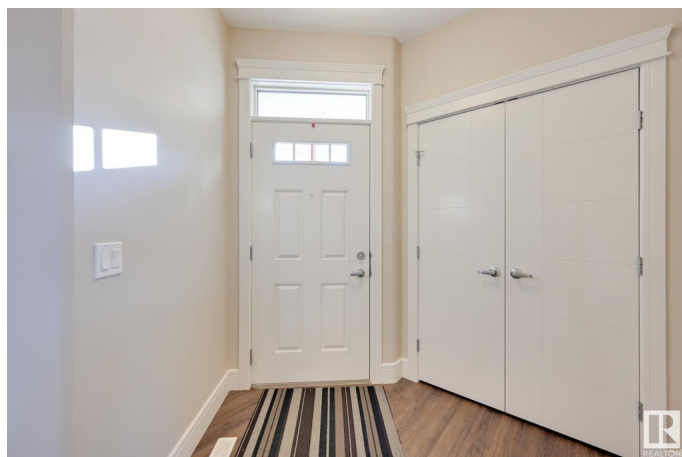
Spruce Ridge, Spruce Grove, AB

Welcome to this inviting single-family home that blends comfort, function, and style, perfect for growing families or anyone looking for extra space. Step inside to a bright and open main floor featuring a cozy living room, a welcoming dining area, a convenient half bathroom, and a modern kitchen complete with stainless steel appliances. Upstairs, you'll find three spacious bedrooms and two full bathrooms, including a private ensuite in the serene primary suite. A generous bonus room adds flexibility for a home office, playroom, or cozy movie nights. The fully finished basement offers even more space with a large second living area and a 4-piece bathroom, ideal for guests or family hangouts. Outside, enjoy summer days on the sunny deck and make use of the large backyard and handy storage shed. With a double attached garage and close proximity to schools, shopping, and essential amenities, this is a place youâ€™™ll be proud to call home!

Built in 2017

Essential Information

| | |
|------------|-----------|
| MLS® # | E4444306 |
| Price | \$539,900 |
| Bedrooms | 3 |
| Bathrooms | 3.50 |
| Full Baths | 3 |



| | |
|----------------|------------------------|
| Half Baths | 1 |
| Square Footage | 1,770 |
| Acres | 0.00 |
| Year Built | 2017 |
| Type | Single Family |
| Sub-Type | Detached Single Family |
| Style | 2 Storey |
| Status | Active |

Community Information

| | |
|-------------|----------------------|
| Address | 28 Springhaven Close |
| Area | Spruce Grove |
| Subdivision | Spruce Ridge |
| City | Spruce Grove |
| County | ALBERTA |
| Province | AB |
| Postal Code | T7X 0V1 |

Amenities

| | |
|----------------|------------------------|
| Amenities | See Remarks |
| Parking Spaces | 4 |
| Parking | Double Garage Attached |

Interior

| | |
|-------------------|---|
| Interior Features | ensuite bathroom |
| Appliances | Dishwasher-Built-In, Dryer, Garage Control, Garage Opener, Refrigerator, Storage Shed, Stove-Electric, Washer |
| Heating | Forced Air-1, Natural Gas |
| Stories | 3 |
| Has Basement | Yes |
| Basement | Full, Finished |

Exterior

| | |
|-------------------|---|
| Exterior | Wood, Vinyl |
| Exterior Features | Playground Nearby, Public Swimming Pool, Public Transportation, Schools, Shopping Nearby, See Remarks |
| Roof | Asphalt Shingles |
| Construction | Wood, Vinyl |
| Foundation | Concrete Perimeter |

School Information

| | |
|------------|------------------------|
| Elementary | Brookwood School |
| Middle | Greystone Centennial |
| High | Spruce Grove Composite |

Additional Information

| | |
|----------------|-----------------|
| Date Listed | June 25th, 2025 |
| Days on Market | 9 |
| Zoning | Zone 91 |

DATA IS DEEMED RELIABLE BUT IS NOT GUARANTEED ACCURATE BY THE REALTORS® ASSOCIATION OF EDMONTON. COPYRIGHT 2025 BY THE REALTORS® ASSOCIATION OF EDMONTON. ALL RIGHTS RESERVED.Trademarks are owned or controlled by the Canadian Real Estate Association (CREA) and identify real estate professionals who are members of CREA (REALTOR®, REALTORS®) and/or the quality of services they provide (MLS®, Multiple Listing Service®)

Listing information last updated on July 4th, 2025 at 1:47am MDT