

\$469,000 - 92 Greystone Crescent, Spruce Grove

MLS® #E4444305

\$469,000

3 Bedroom, 2.50 Bathroom, 1,765 sqft

Single Family on 0.00 Acres

Grove Meadows, Spruce Grove, AB

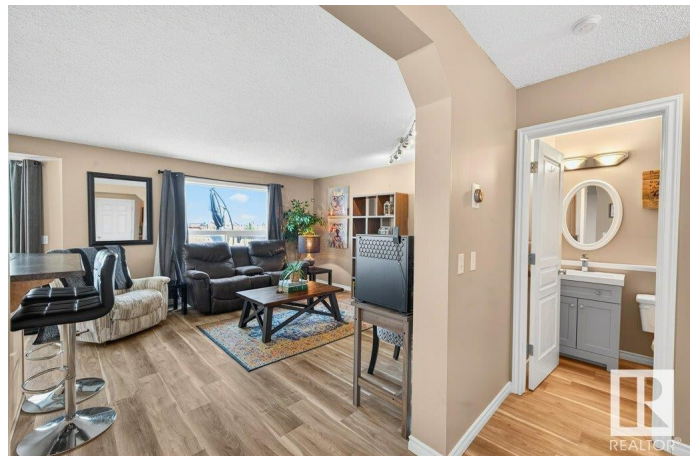
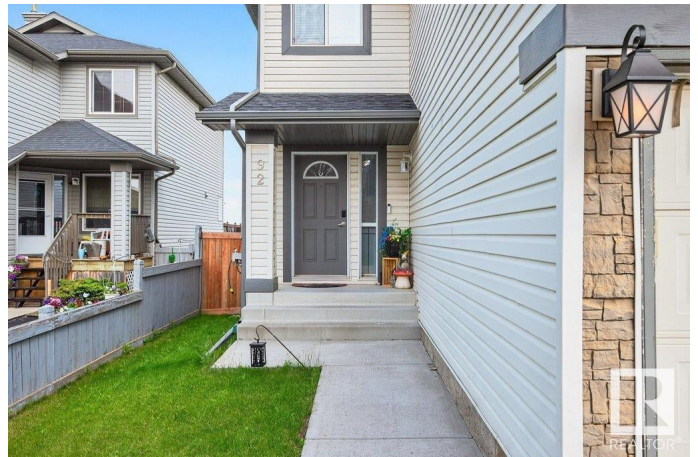
This beautiful 3-bedroom, 3-bath home in Spruce Grove offers the perfect blend of space, style, & location, close to the splash park & with a view of Jubilee Park. Enjoy sunrises on the back deck & kitchen, as well as access to walking trails, playgrounds, and year-round events just steps from your backyard. Inside, you'll find a bright, open-concept main floor ideal for family living and entertaining. The living room features a fireplace and views. The kitchen has a large pantry and space to entertain. Upstairs, the primary KING sized retreat features two closets and a private ensuite, while two additional bedrooms offer room for everyone. OH! And don't forget the bonus room and the walkout basement ready for your ideas! Enjoy the double attached garage, NEW shingles, and the yard for summer fun. Situated close to schools with quick access to Hwy 16 and 16A, this is the perfect home for busy families who love comfort and connection to nature. A walk-out gem in a prime locationâ€™donâ€™t miss it!

Built in 2006

Essential Information

MLS® # E4444305

Price \$469,000



Bedrooms	3
Bathrooms	2.50
Full Baths	2
Half Baths	1
Square Footage	1,765
Acres	0.00
Year Built	2006
Type	Single Family
Sub-Type	Detached Single Family
Style	2 Storey
Status	Active

Community Information

Address	92 Greystone Crescent
Area	Spruce Grove
Subdivision	Grove Meadows
City	Spruce Grove
County	ALBERTA
Province	AB
Postal Code	T7X 0A7

Amenities

Amenities	On Street Parking, Air Conditioner, Deck, Detectors Smoke, Hot Water Natural Gas, No Smoking Home, Vinyl Windows, Walkout Basement
Parking Spaces	4
Parking	Double Garage Attached, Heated, Insulated

Interior

Interior Features	ensuite bathroom
Appliances	Air Conditioning-Central, Dishwasher-Built-In, Dryer, Garage Control, Garage Opener, Hood Fan, Oven-Microwave, Storage Shed, Stove-Electric, Washer, Window Coverings, Refrigerators-Two, Garage Heater
Heating	Forced Air-1, Natural Gas
Fireplace	Yes
Fireplaces	Corner
Stories	2
Has Basement	Yes
Basement	Full, Unfinished

Exterior

Exterior	Wood, Vinyl
Exterior Features	Fenced, Golf Nearby, Low Maintenance Landscape, No Back Lane, Playground Nearby, Schools, Shopping Nearby
Roof	Asphalt Shingles
Construction	Wood, Vinyl
Foundation	Concrete Perimeter

School Information

Elementary	Millgrove
Middle	Greystone
High	Composite

Additional Information

Date Listed	June 25th, 2025
Days on Market	73
Zoning	Zone 91

DATA IS DEEMED RELIABLE BUT IS NOT GUARANTEED ACCURATE BY THE REALTORS® ASSOCIATION OF EDMONTON. COPYRIGHT 2025 BY THE REALTORS® ASSOCIATION OF EDMONTON. ALL RIGHTS RESERVED.Trademarks are owned or controlled by the Canadian Real Estate Association (CREA) and identify real estate professionals who are members of CREA (REALTOR®, REALTORS®) and/or the quality of services they provide (MLS®, Multiple Listing Service®)

Listing information last updated on September 6th, 2025 at 7:17am MDT