

\$1,898,000 - 179 Quesnell Crescent, Edmonton

MLS® #E4442510

\$1,898,000

4 Bedroom, 5.00 Bathroom, 4,347 sqft
Single Family on 0.00 Acres

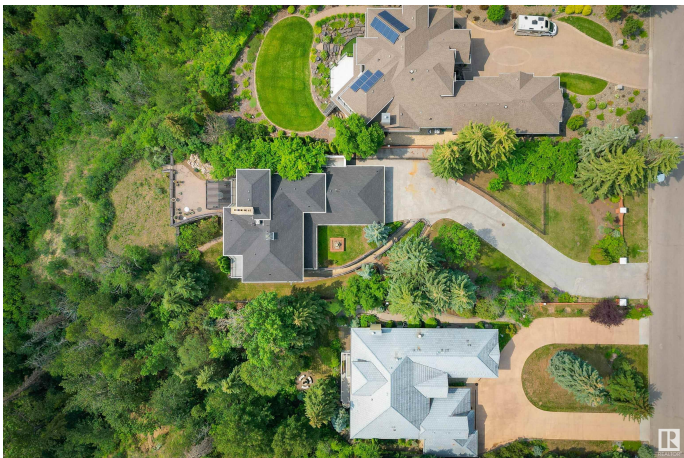
Quesnell Heights, Edmonton, AB

QUESNELL CRESCENT, stunning two-story brick residence on a private 22,938 sq ft lot, overlooking the Saskatchewan River. This upgraded home boasts breathtaking views, a landscaped yard, and multiple outdoor spaces for a private lifestyle. Inside, enjoy a layout designed to maximize the panoramic vistas, with high-quality materials and impeccable craftsmanship throughout. Beyond the breathtaking scenery and privacy, this remarkable residence offers convenient proximity to wonderful schools, shopping, community amenities, the University of Alberta, easy access to Henday and airport and the vibrant Downtown area. Immerse yourself in a world of luxury, privacy.

Built in 1965

Essential Information

MLS® #	E4442510
Price	\$1,898,000
Bedrooms	4
Bathrooms	5.00
Full Baths	4
Half Baths	2
Square Footage	4,347
Acres	0.00
Year Built	1965



Type	Single Family
Sub-Type	Detached Single Family
Style	2 and Half Storey
Status	Active

Community Information

Address	179 Quesnell Crescent
Area	Edmonton
Subdivision	Quesnell Heights
City	Edmonton
County	ALBERTA
Province	AB
Postal Code	T5R 5P1

Amenities

Amenities	Air Conditioner, Closet Organizers, Deck, Sauna; Swirlpool; Steam, Sprinkler Sys-Underground, Walkout Basement
Parking	Double Garage Attached

Interior

Interior Features	ensuite bathroom
Appliances	Air Conditioning-Central, Dryer, Garage Opener, Hood Fan, Oven-Built-In, Oven-Microwave, Refrigerator, Stove-Electric, Vacuum System Attachments, Vacuum Systems, Washer, Dishwasher-Two, Projector, TV Wall Mount
Heating	Forced Air-2, Natural Gas
Fireplace	Yes
Fireplaces	Mantel, Stone Facing
Stories	4
Has Basement	Yes
Basement	Full, Finished

Exterior

Exterior	Wood, Brick
Exterior Features	Fruit Trees/Shrubs, Hillside, Landscaped, Playground Nearby, Private Setting, River Valley View, Schools, Shopping Nearby
Roof	Asphalt Shingles
Construction	Wood, Brick
Foundation	Concrete Perimeter

School Information

Elementary	Rio Terrace
Middle	Hillcrest
High	Jasper Place

Additional Information

Date Listed	June 14th, 2025
Days on Market	36
Zoning	Zone 22

DATA IS DEEMED RELIABLE BUT IS NOT GUARANTEED ACCURATE BY THE REALTORS® ASSOCIATION OF EDMONTON. COPYRIGHT 2025 BY THE REALTORS® ASSOCIATION OF EDMONTON. ALL RIGHTS RESERVED.Trademarks are owned or controlled by the Canadian Real Estate Association (CREA) and identify real estate professionals who are members of CREA (REALTOR®, REALTORS®) and/or the quality of services they provide (MLS®, Multiple Listing Service®)

Listing information last updated on July 20th, 2025 at 1:32am MDT