

## \$465,000 - 9307 128 Avenue, Edmonton

MLS® #E4441145

**\$465,000**

6 Bedroom, 2.00 Bathroom, 980 sqft

Single Family on 0.00 Acres

Killarney, Edmonton, AB

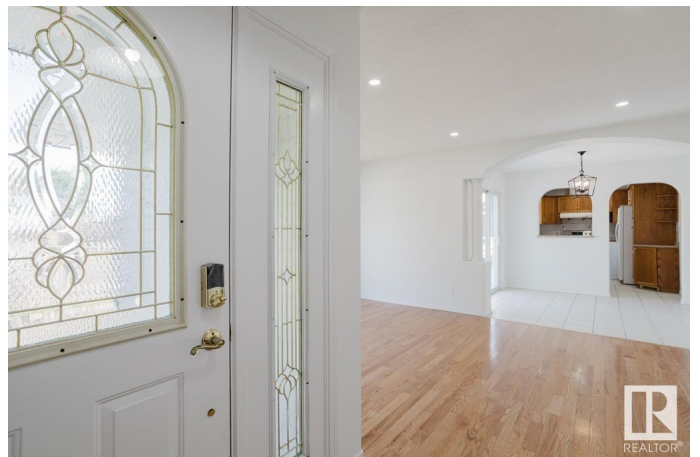
Golden opportunity to own a 5 bedroom bungalow situated on large corner lot. 3 bedrooms on main floor with huge living room adorned with real hardwood flooring. Ceramic tiles in the kitchen, 4 piece bath, separate dinning with siding door to large deck, & main floor stacking washer and dryer. The lower level has a separate entrance, 2 bedrooms, 4 piece bath, second kitchen, and full size laundry set. Nicely set up an an inlaw suite currently. Detached double garage is heated for your vehicles comfort come Winter. Upgrades to property include New Shingles, new vinyl windows, new furnace (basement), new hot water tank, new vinyl flooring, new security cameras system, new concrete pads at front & back doors, lighting thruout property & fresh paint. Massive yard with vegetables garden in north yard, plenty of room in sideyard for family & firepit. Basement is separately metered and own furnace plus two bedrooms, living room, 4 piece bathroom, 2nd kitchen and full size laundry set. Basement has two entry doors

Built in 1961

### Essential Information

MLS® # E4441145

Price \$465,000



Bedrooms	6
Bathrooms	2.00
Full Baths	2
Square Footage	980
Acres	0.00
Year Built	1961
Type	Single Family
Sub-Type	Detached Single Family
Style	Bungalow
Status	Active

### Community Information

Address	9307 128 Avenue
Area	Edmonton
Subdivision	Killarney
City	Edmonton
County	ALBERTA
Province	AB
Postal Code	T5E 0H3

### Amenities

Amenities	Deck
Parking Spaces	4
Parking	Double Garage Detached, Heated, Over Sized

### Interior

Appliances	Dishwasher-Built-In, Dryer, Garage Control, Garage Opener, Hood Fan, Stacked Washer/Dryer, Washer, Window Coverings, Refrigerators-Two, Stoves-Two
Heating	Forced Air-1, Natural Gas
Stories	2
Has Suite	Yes
Has Basement	Yes
Basement	Full, Finished

### Exterior

Exterior	Wood, Vinyl
Exterior Features	Back Lane, Corner Lot, Fenced, Landscaped, Playground Nearby, Public Transportation, Schools, Shopping Nearby

Roof	Asphalt Shingles
Construction	Wood, Vinyl
Foundation	Concrete Perimeter

### **School Information**

Elementary	Mee-Yah-Noh
Middle	Killarney Junior High
High	Queen Elizabeth

### **Additional Information**

Date Listed	June 6th, 2025
Days on Market	37
Zoning	Zone 02

DATA IS DEEMED RELIABLE BUT IS NOT GUARANTEED ACCURATE BY THE REALTORS® ASSOCIATION OF EDMONTON. COPYRIGHT 2025 BY THE REALTORS® ASSOCIATION OF EDMONTON. ALL RIGHTS RESERVED. Trademarks are owned or controlled by the Canadian Real Estate Association (CREA) and identify real estate professionals who are members of CREA (REALTOR®, REALTORS®) and/or the quality of services they provide (MLS®, Multiple Listing Service®)

Listing information last updated on July 13th, 2025 at 2:32pm MDT