

## \$55,000 - 9535 135 Avenue, Edmonton

MLS® #E4438666

**\$55,000**

0 Bedroom, 0.00 Bathroom,  
Business on 0.00 Acres

Glengarry, Edmonton, AB

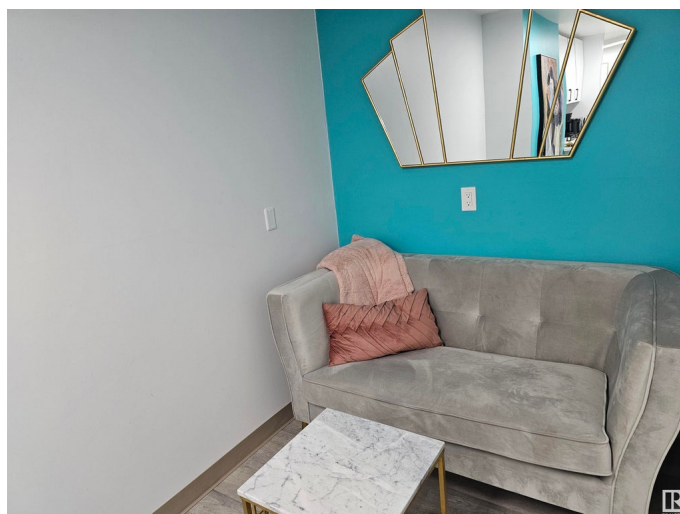
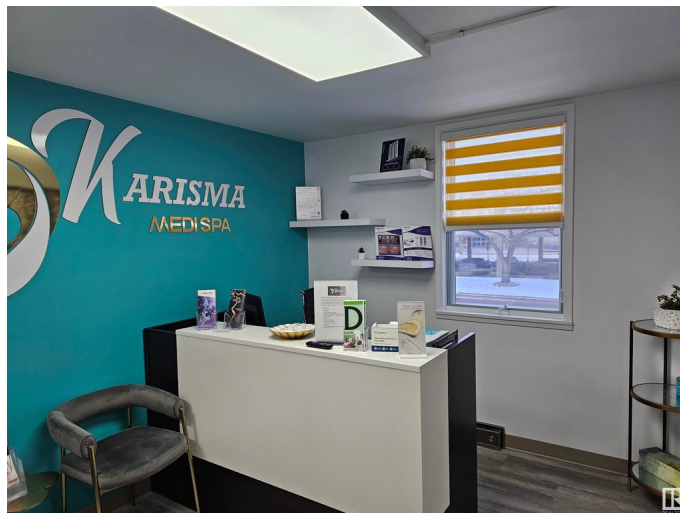
Great opportunity to own a fully equipped and operating medi-spa. Located in a busy area with great exposure, lease in place for 5 years at a very affordable rate. Some services offered include: Laser, facials, various facial fillers and Botox with the ability to expand to offer additional services. Beautifully renovated and operating for over 1 year with 3 procedure rooms and reception area. Buyer must assume the lease on the pieces of 3 medi-spa equipment. All equipment is just over 1 year old. Don't miss this opportunity!

### Essential Information

MLS® #	E4438666
Price	\$55,000
Bathrooms	0.00
Acres	0.00
Type	Business
Status	Active

### Community Information

Address	9535 135 Avenue
Area	Edmonton
Subdivision	Glengarry
City	Edmonton
County	ALBERTA
Province	AB



Postal Code            T5E 1N8

**Additional Information**

Date Listed            May 26th, 2025

Days on Market       114

Zoning                Zone 02

DATA IS DEEMED RELIABLE BUT IS NOT GUARANTEED ACCURATE BY THE REALTORS® ASSOCIATION OF EDMONTON. COPYRIGHT 2025 BY THE REALTORS® ASSOCIATION OF EDMONTON. ALL RIGHTS RESERVED.Trademarks are owned or controlled by the Canadian Real Estate Association (CREA) and identify real estate professionals who are members of CREA (REALTOR®, REALTORS®) and/or the quality of services they provide (MLS®, Multiple Listing Service®)

Listing information last updated on September 17th, 2025 at 8:32pm MDT