

\$685,000 - 3503 8 Avenue, Edmonton

MLS® #E4438531

\$685,000

5 Bedroom, 3.00 Bathroom, 2,293 sqft

Single Family on 0.00 Acres

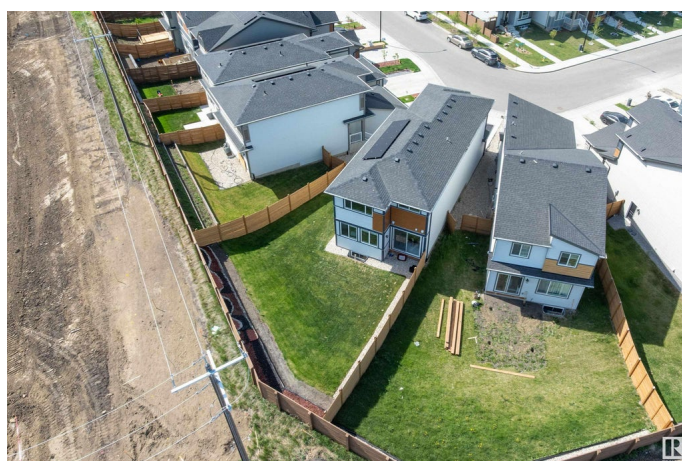
Charlesworth, Edmonton, AB

Jayman-built 2,292 sq. ft. beauty on a spacious pie lot with a big backyard! This upgraded home features a MAIN FLOOR BEDROOM and FULL BATH, SPICE KITCHEN, two-tone cabinets, upgraded appliances, non-ceramic tile flooring, and elegant spindle railings with golden fittings. Upstairs offers 4 bedrooms, a bonus room, 2 full baths—including a 5-piece ensuite with makeup counter—and a convenient laundry room. Enjoy smart Wi-Fi switches, SOLAR PANELS, gas lines to the deck and garage, a GARAGE DRAIN, and a SEPARATE SIDE ENTRANCE to the basement. Stylish, energy-efficient, and future-ready!

Built in 2022

Essential Information

MLS® #	E4438531
Price	\$685,000
Bedrooms	5
Bathrooms	3.00
Full Baths	3
Square Footage	2,293
Acres	0.00
Year Built	2022
Type	Single Family
Sub-Type	Detached Single Family



Style	2 Storey
Status	Active

Community Information

Address	3503 8 Avenue
Area	Edmonton
Subdivision	Charlesworth
City	Edmonton
County	ALBERTA
Province	AB
Postal Code	T6X 2Z1

Amenities

Amenities	Carbon Monoxide Detectors, Ceiling 9 ft., Hot Water Instant
Parking	Double Garage Attached

Interior

Interior Features	ensuite bathroom
Appliances	Dryer, Garage Control, Garage Opener, Oven-Microwave, Refrigerator, Stove-Electric, Stove-Gas, Washer
Heating	Forced Air-1, Natural Gas
Fireplace	Yes
Fireplaces	Wall Mount
Stories	2
Has Basement	Yes
Basement	Full, Unfinished

Exterior

Exterior	Wood, Stone, Vinyl, Hardie Board Siding
Exterior Features	Fenced, Landscaped, Playground Nearby, Shopping Nearby
Roof	Asphalt Shingles
Construction	Wood, Stone, Vinyl, Hardie Board Siding
Foundation	Concrete Perimeter

Additional Information

Date Listed	May 26th, 2025
Days on Market	20
Zoning	Zone 53
HOA Fees	200

HOA Fees Freq. Annually

DATA IS DEEMED RELIABLE BUT IS NOT GUARANTEED ACCURATE BY THE REALTORS® ASSOCIATION OF EDMONTON. COPYRIGHT 2025 BY THE REALTORS® ASSOCIATION OF EDMONTON. ALL RIGHTS RESERVED. Trademarks are owned or controlled by the Canadian Real Estate Association (CREA) and identify real estate professionals who are members of CREA (REALTOR®, REALTORS®) and/or the quality of services they provide (MLS®, Multiple Listing Service®)

Listing information last updated on June 15th, 2025 at 3:17pm MDT