

\$551,247 - 8460 183 Avenue, Edmonton

MLS® #E4438028

\$551,247

3 Bedroom, 3.00 Bathroom, 1,753 sqft

Single Family on 0.00 Acres

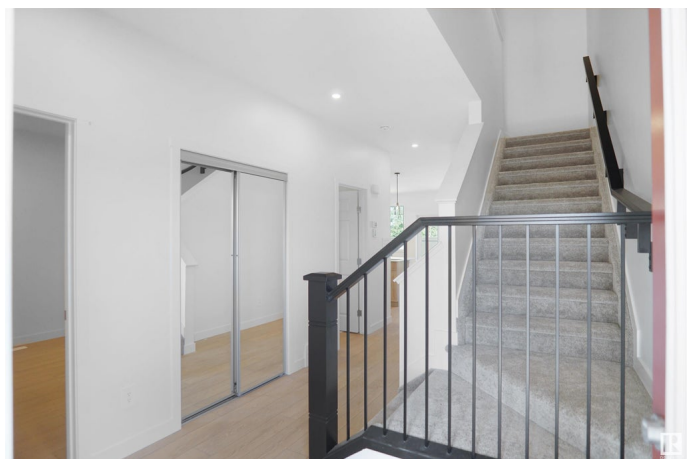
Klarvatten, Edmonton, AB

Welcome to the "Willow" built by the award-winning builder Pacesetter homes and is located in the heart College woods and just steps to the walking trails and parks. As you enter the home you are greeted by luxury vinyl plank flooring throughout the great room, kitchen, and the breakfast nook. Your large kitchen features tile back splash, an island a flush eating bar, quartz counter tops and an undermount sink. Just off of the kitchen and tucked away by the front entry is a 3 piece bath next to the main floor flex room. Upstairs is the master's retreat with a large walk in closet and a 4-piece en-suite. The second level also include 2 additional bedrooms with a conveniently placed main 4-piece bathroom and a good sized bonus room. The unspoiled basement has a side separate entrance perfect for future development. Home is now move in ready !

Built in 2025

Essential Information

| | |
|----------------|-----------|
| MLS® # | E4438028 |
| Price | \$551,247 |
| Bedrooms | 3 |
| Bathrooms | 3.00 |
| Full Baths | 3 |
| Square Footage | 1,753 |



| | |
|------------|------------------------|
| Acres | 0.00 |
| Year Built | 2025 |
| Type | Single Family |
| Sub-Type | Detached Single Family |
| Style | 2 Storey |
| Status | Active |

Community Information

| | |
|-------------|-----------------|
| Address | 8460 183 Avenue |
| Area | Edmonton |
| Subdivision | Klarvatten |
| City | Edmonton |
| County | ALBERTA |
| Province | AB |
| Postal Code | T5Z 0X2 |

Amenities

| | |
|-----------|------------------------|
| Amenities | See Remarks |
| Parking | Double Garage Attached |

Interior

| | |
|-------------------|-------------------------------|
| Interior Features | ensuite bathroom |
| Appliances | Garage Control, Garage Opener |
| Heating | Forced Air-1, Natural Gas |
| Stories | 2 |
| Has Basement | Yes |
| Basement | Full, Unfinished |

Exterior

| | |
|-------------------|--|
| Exterior | Wood, Stone, Vinyl |
| Exterior Features | Airport Nearby, Golf Nearby, Park/Reserve, Playground Nearby, Public Swimming Pool, Public Transportation, Schools, Shopping Nearby, See Remarks |
| Roof | Asphalt Shingles |
| Construction | Wood, Stone, Vinyl |
| Foundation | Concrete Perimeter |

Additional Information

| | |
|-------------|----------------|
| Date Listed | May 22nd, 2025 |
|-------------|----------------|

Days on Market 76

Zoning Zone 28

DATA IS DEEMED RELIABLE BUT IS NOT GUARANTEED ACCURATE BY THE REALTORS® ASSOCIATION OF EDMONTON. COPYRIGHT 2025 BY THE REALTORS® ASSOCIATION OF EDMONTON. ALL RIGHTS RESERVED. Trademarks are owned or controlled by the Canadian Real Estate Association (CREA) and identify real estate professionals who are members of CREA (REALTOR®, REALTORS®) and/or the quality of services they provide (MLS®, Multiple Listing Service®)

Listing information last updated on August 5th, 2025 at 11:17pm MDT