

\$119,000 - 102 12710 127 Street, Edmonton

MLS® #E4438027

\$119,000

2 Bedroom, 1.00 Bathroom, 635 sqft

Condo / Townhouse on 0.00 Acres

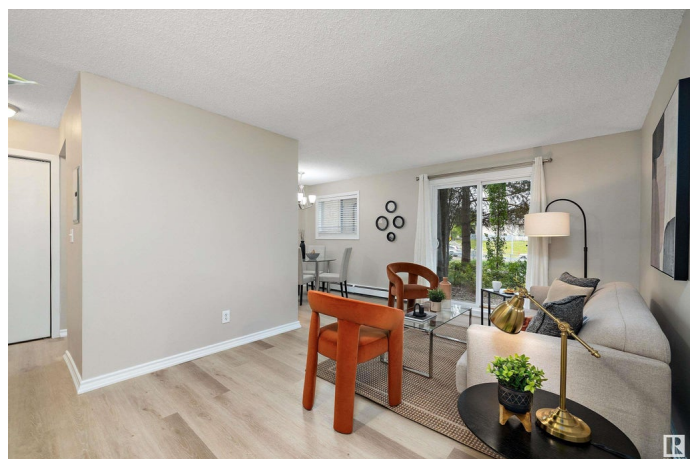
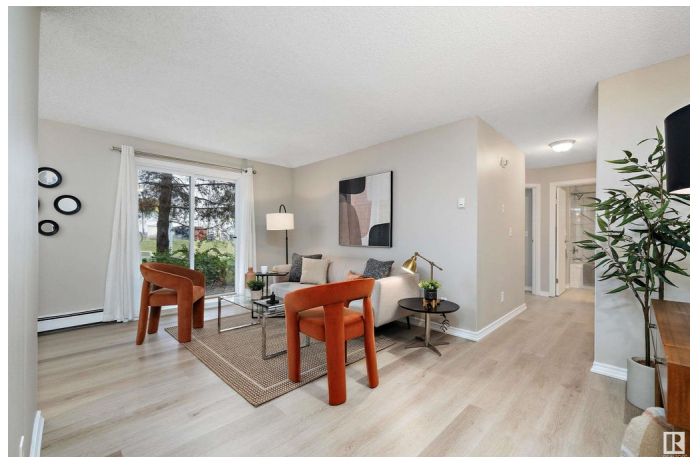
Athlone, Edmonton, AB

Investor Alert!!! Welcome to this charming condo located in Edmonton's north end that is ideal for investors or those stepping into homeownership! This two bedroom, one bathroom home showcases freshly painted walls and ceilings, complemented by brand new luxury vinyl plank flooring throughout, an updated kitchen with a new stainless steel fridge and stove, while updated light fixtures, blinds and curtains add a touch of contemporary flair. The four piece bathroom features a brand new bathtub with chic tile surround and a new vanity. With the added convenience of onsite parking and seamless access to Highway 16, commuting is effortless. This home is perfectly situated near parks, schools, walking trails, shopping and restaurants and offers both style and practicality in a prime location.

Built in 2001

Essential Information

MLS® #	E4438027
Price	\$119,000
Bedrooms	2
Bathrooms	1.00
Full Baths	1
Square Footage	635
Acres	0.00



Year Built	2001
Type	Condo / Townhouse
Sub-Type	Lowrise Apartment
Style	Single Level Apartment
Status	Active

Community Information

Address	102 12710 127 Street
Area	Edmonton
Subdivision	Athlone
City	Edmonton
County	ALBERTA
Province	AB
Postal Code	T5L 1A5

Amenities

Amenities	See Remarks
Parking Spaces	1
Parking	Stall

Interior

Appliances	Dishwasher-Portable, Refrigerator, Stove-Electric, Window Coverings
Heating	Hot Water, Natural Gas
# of Stories	3
Stories	1
Has Basement	Yes
Basement	None, No Basement

Exterior

Exterior	Wood, Stucco
Exterior Features	Public Transportation, Schools, Shopping Nearby
Roof	Asphalt Shingles
Construction	Wood, Stucco
Foundation	Concrete Perimeter

Additional Information

Date Listed	May 22nd, 2025
Days on Market	26
Zoning	Zone 01

Condo Fee \$368

DATA IS DEEMED RELIABLE BUT IS NOT GUARANTEED ACCURATE BY THE REALTORS® ASSOCIATION OF EDMONTON. COPYRIGHT 2025 BY THE REALTORS® ASSOCIATION OF EDMONTON. ALL RIGHTS RESERVED.Trademarks are owned or controlled by the Canadian Real Estate Association (CREA) and identify real estate professionals who are members of CREA (REALTOR®, REALTORS®) and/or the quality of services they provide (MLS®, Multiple Listing Service®)

Listing information last updated on June 17th, 2025 at 3:32pm MDT