

## **\$484,900 - 1914 Hammond Place, Edmonton**

---

MLS® #E4435902

**\$484,900**

3 Bedroom, 2.50 Bathroom, 1,501 sqft

Single Family on 0.00 Acres

The Hamptons, Edmonton, AB

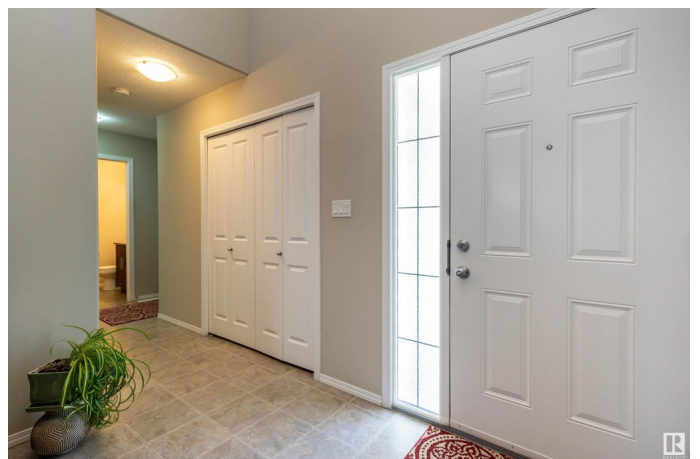
Welcome to your dream home in the desirable Hamptons! This stunning 1500 sq ft, 2-story residence is perfectly situated in a quiet cul-de-sac, offering both privacy and a family-friendly environment. Step inside and be greeted by a spacious living room with gas fireplace and a large dining room, ideal for entertaining and family gatherings. The expansion kitchen features modern stainless steel appliances, making meal preparation a joy. A convenient 2 piece bath on the main floor adds to the home's functionality. Upstairs, you'll find 2 generously sized bedrooms, a well-appointed 4-piece bathroom, and a luxurious Primary bedroom complete with a private 4-piece ensuite. Enjoy the comfort of A/C throughout the home. The property includes a double garage, providing ample space for vehicles and storage. Outside, the huge west-facing backyard is perfect for outdoor activities and relaxation, offering plenty of space for gardening, play, and summer bbqs. Don't miss the opportunity to own this exceptional home!

Built in 2010

### **Essential Information**

MLS® # E4435902

Price \$484,900



|                |                        |
|----------------|------------------------|
| Bedrooms       | 3                      |
| Bathrooms      | 2.50                   |
| Full Baths     | 2                      |
| Half Baths     | 1                      |
| Square Footage | 1,501                  |
| Acres          | 0.00                   |
| Year Built     | 2010                   |
| Type           | Single Family          |
| Sub-Type       | Detached Single Family |
| Style          | 2 Storey               |
| Status         | Active                 |

### Community Information

|             |                    |
|-------------|--------------------|
| Address     | 1914 Hammond Place |
| Area        | Edmonton           |
| Subdivision | The Hamptons       |
| City        | Edmonton           |
| County      | ALBERTA            |
| Province    | AB                 |
| Postal Code | T6M 0K3            |

### Amenities

|           |   |
|-----------|---|
| Amenities | Air Conditioner, Carbon Monoxide Detectors, Detectors Smoke |
| Parking   | Double Garage Attached                                      |

### Interior

|                   |   |
|-------------------|---|
| Interior Features | ensuite bathroom  |
| Appliances        | Air Conditioning-Central, Dishwasher-Built-In, Dryer, Garage Control, Garage Opener, Refrigerator, Stove-Electric, Washer, Window Coverings |
| Heating           | Forced Air-1, Natural Gas   |
| Fireplace         | Yes   |
| Fireplaces        | Mantel, Tile Surround   |
| Stories           | 2   |
| Has Basement      | Yes   |
| Basement          | Full, Unfinished  |

### Exterior

|          |             |
|----------|-------------|
| Exterior | Wood, Vinyl |
|----------|-------------|

|                   |   |
|-------------------|---|
| Exterior Features | Public Transportation, Schools, Shopping Nearby |
| Roof              | Asphalt Shingles                                |
| Construction      | Wood, Vinyl                                     |
| Foundation        | Concrete Perimeter                              |

**Additional Information**

|                |                |
|----------------|----------------|
| Date Listed    | May 12th, 2025 |
| Days on Market | 35             |
| Zoning         | Zone 58        |

DATA IS DEEMED RELIABLE BUT IS NOT GUARANTEED ACCURATE BY THE REALTORS® ASSOCIATION OF EDMONTON. COPYRIGHT 2025 BY THE REALTORS® ASSOCIATION OF EDMONTON. ALL RIGHTS RESERVED.Trademarks are owned or controlled by the Canadian Real Estate Association (CREA) and identify real estate professionals who are members of CREA (REALTOR®, REALTORS®) and/or the quality of services they provide (MLS®, Multiple Listing Service®)

Listing information last updated on June 16th, 2025 at 6:02pm MDT