

# \$449,000 - 15 Eton Link, Spruce Grove

MLS® #E4434540

**\$449,000**

3 Bedroom, 2.50 Bathroom, 1,708 sqft  
Single Family on 0.00 Acres

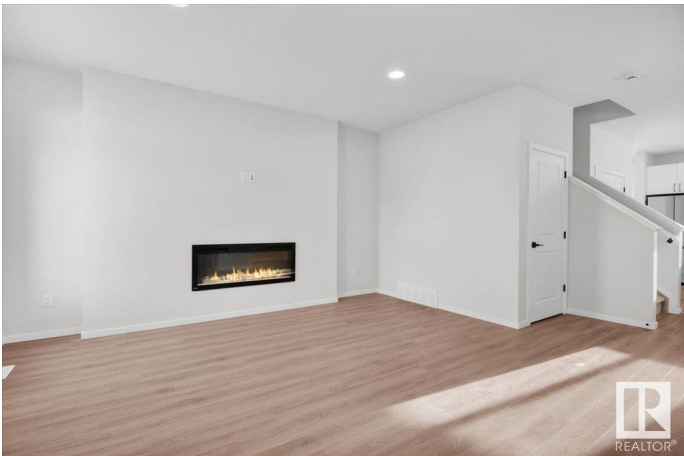
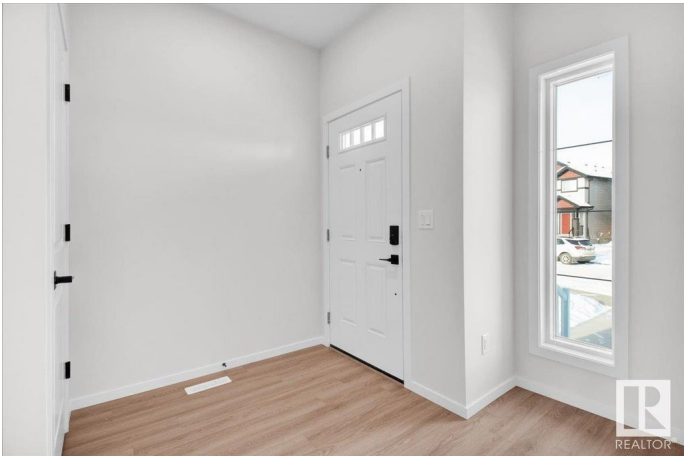
Easton, Spruce Grove, AB

This beautiful 2-storey home in Spruce Grove offers a bright, open-concept main floor with vinyl plank flooring and triple pane vinyl windows throughout. The living room provides a cozy electric fireplace. The spacious kitchen comes equipped with all appliances, and a convenient 2-pc bath is tucked nearby. At the back door, there is a functional mudroom with a bench and cubbies. Upstairs, you'll find a versatile bonus room, 2 bedrooms, a 4-pc bath, and a laundry area. The primary bedroom features a 5-pc ensuite with dual sinks and a large walk-in closet. Enjoy the convenience of a separate side entrance to the basement. Where comfort meets convenience - this newly built home has it all!  
\*Photos are representative\*

Built in 2025

## Essential Information

|                |           |
|----------------|-----------|
| MLS® #         | E4434540  |
| Price          | \$449,000 |
| Bedrooms       | 3         |
| Bathrooms      | 2.50      |
| Full Baths     | 2         |
| Half Baths     | 1         |
| Square Footage | 1,708     |
| Acres          | 0.00      |



|            |                        |
|------------|------------------------|
| Year Built | 2025                   |
| Type       | Single Family          |
| Sub-Type   | Detached Single Family |
| Style      | 2 Storey               |
| Status     | Active                 |

### Community Information

|             |              |
|-------------|--------------|
| Address     | 15 Eton Link |
| Area        | Spruce Grove |
| Subdivision | Easton       |
| City        | Spruce Grove |
| County      | ALBERTA      |
| Province    | AB           |
| Postal Code | T7X 4B7      |

### Amenities

|           |                                                                                |
|-----------|--------------------------------------------------------------------------------|
| Amenities | Ceiling 9 ft., Detectors Smoke, No Animal Home, No Smoking Home, Vinyl Windows |
| Parking   | Parking Pad Cement/Paved                                                       |

### Interior

|                   |                                                                       |
|-------------------|-----------------------------------------------------------------------|
| Interior Features | ensuite bathroom                                                      |
| Appliances        | Dishwasher-Built-In, Microwave Hood Fan, Refrigerator, Stove-Electric |
| Heating           | Forced Air-1, Natural Gas                                             |
| Fireplace         | Yes                                                                   |
| Fireplaces        | Insert                                                                |
| Stories           | 2                                                                     |
| Has Basement      | Yes                                                                   |
| Basement          | Full, Unfinished                                                      |

### Exterior

|                   |                                                           |
|-------------------|-----------------------------------------------------------|
| Exterior          | Wood, Vinyl                                               |
| Exterior Features | Park/Reserve, Playground Nearby, Schools, Shopping Nearby |
| Roof              | Asphalt Shingles                                          |
| Construction      | Wood, Vinyl                                               |
| Foundation        | Concrete Perimeter                                        |

### Additional Information

|             |               |
|-------------|---------------|
| Date Listed | May 5th, 2025 |
|-------------|---------------|

Days on Market 62

Zoning Zone 91

DATA IS DEEMED RELIABLE BUT IS NOT GUARANTEED ACCURATE BY THE REALTORS® ASSOCIATION OF EDMONTON. COPYRIGHT 2025 BY THE REALTORS® ASSOCIATION OF EDMONTON. ALL RIGHTS RESERVED. Trademarks are owned or controlled by the Canadian Real Estate Association (CREA) and identify real estate professionals who are members of CREA (REALTOR®, REALTORS®) and/or the quality of services they provide (MLS®, Multiple Listing Service®)

Listing information last updated on July 6th, 2025 at 8:32am MDT