

# \$0 - 4614 101 Street, Edmonton

MLS® #E4432174

**\$0**

0 Bedroom, 0.00 Bathroom,  
Industrial on 0.00 Acres

Papaschase Industrial, Edmonton, AB

4610/12/14 " 101 Street offers up to 10,731 sq.ft.± of office/warehouse space with flexible bay sizes starting at 3,577 sq.ft.±. The property includes a secured 7,200 sq.ft.± yard, three 12'™ x 14'™ grade-level doors, sump drainage, and fibre optics availability. Zoned IM (Medium Industrial), with 15'™ ceiling height and radiant heat in the warehouse. The site is located near major routes including Whitemud Drive, Calgary Trail, Gateway Boulevard, and Anthony Henday Drive.

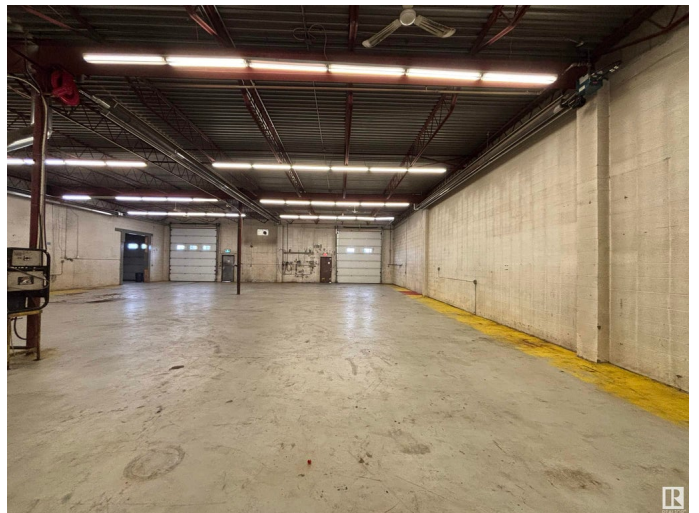
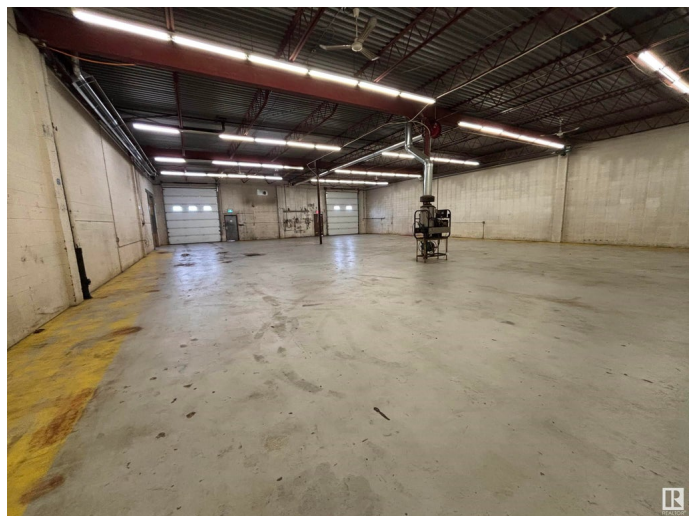
Built in 1977

## Essential Information

MLS® #	E4432174
Bathrooms	0.00
Acres	0.00
Year Built	1977
Type	Industrial
Status	Active

## Community Information

Address	4614 101 Street
Area	Edmonton
Subdivision	Papaschase Industrial
City	Edmonton
County	ALBERTA



Province AB  
Postal Code T6E 5G9

### **Exterior**

Exterior Mixed  
Construction Mixed

### **Additional Information**

Date Listed April 22nd, 2025  
Days on Market 8  
Zoning Zone 41

DATA IS DEEMED RELIABLE BUT IS NOT GUARANTEED ACCURATE BY THE REALTORS® ASSOCIATION OF EDMONTON. COPYRIGHT 2025 BY THE REALTORS® ASSOCIATION OF EDMONTON. ALL RIGHTS RESERVED. Trademarks are owned or controlled by the Canadian Real Estate Association (CREA) and identify real estate professionals who are members of CREA (REALTOR®, REALTORS®) and/or the quality of services they provide (MLS®, Multiple Listing Service®)

Listing information last updated on April 30th, 2025 at 8:32am MDT