

\$275,000 - 1505 10136 104 Street, Edmonton

MLS® #E4431667

\$275,000

2 Bedroom, 2.00 Bathroom, 990 sqft

Condo / Townhouse on 0.00 Acres

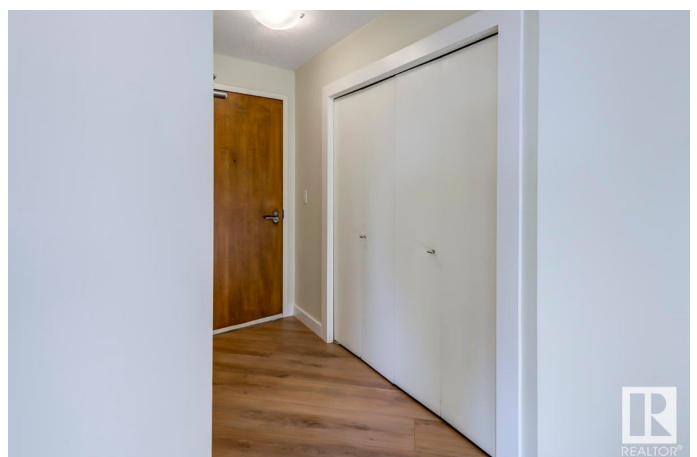
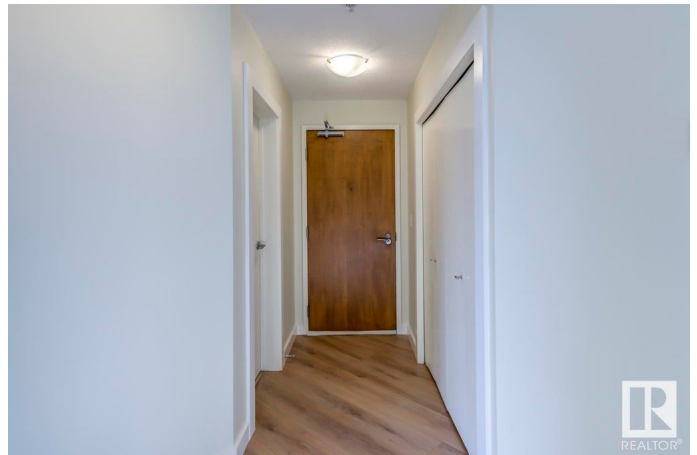
Downtown (Edmonton), Edmonton, AB

Perched on the 15th floor with stunning south and west views—including the Alberta Legislature and the brand new Beaver Hills House Park below—this updated 2-bedroom, 2-bathroom apartment offers the best of downtown living. Enjoy brand new laminate flooring, fresh paint, stainless steel appliances, in-suite laundry, a covered balcony with a natural gas BBQ hookup and a titled underground parking stall located close to the elevator. The primary bedroom features a walk-in closet and full 4 piece ensuite. All just steps from Jasper Avenue, the Ice District, Rogers Place, restaurants, shopping, transit, and every amenity you could ask for. This is what Downtown Living is all about! Some Photo's have been digitally staged.

Built in 2006

Essential Information

MLS® #	E4431667
Price	\$275,000
Bedrooms	2
Bathrooms	2.00
Full Baths	2
Square Footage	990
Acres	0.00
Year Built	2006



Type	Condo / Townhouse
Sub-Type	Apartment High Rise
Style	Single Level Apartment
Status	Active

Community Information

Address	1505 10136 104 Street
Area	Edmonton
Subdivision	Downtown (Edmonton)
City	Edmonton
County	ALBERTA
Province	AB
Postal Code	T5J 0B5

Amenities

Amenities	Intercom, Parking-Visitor, Natural Gas BBQ Hookup
Parking	Parkade, Underground

Interior

Interior Features	ensuite bathroom
Appliances	Dishwasher-Built-In, Dryer, Refrigerator, Stove-Electric, Washer
Heating	Baseboard, Hot Water, Natural Gas
# of Stories	30
Stories	1
Has Basement	Yes
Basement	None, No Basement

Exterior

Exterior	Concrete, Brick, Stucco
Exterior Features	Public Swimming Pool, Public Transportation, Schools, Shopping Nearby, View Downtown
Roof	EPDM Membrane
Construction	Concrete, Brick, Stucco
Foundation	Concrete Perimeter

Additional Information

Date Listed	April 18th, 2025
Days on Market	61
Zoning	Zone 12

Condo Fee \$615

DATA IS DEEMED RELIABLE BUT IS NOT GUARANTEED ACCURATE BY THE REALTORS® ASSOCIATION OF EDMONTON. COPYRIGHT 2025 BY THE REALTORS® ASSOCIATION OF EDMONTON. ALL RIGHTS RESERVED. Trademarks are owned or controlled by the Canadian Real Estate Association (CREA) and identify real estate professionals who are members of CREA (REALTOR®, REALTORS®) and/or the quality of services they provide (MLS®, Multiple Listing Service®)

Listing information last updated on June 17th, 2025 at 9:47pm MDT