

# **\$925,000 - 53510 Range Road 20, Rural Lac Ste. Anne County**

MLS® #E4430577

**\$925,000**

3 Bedroom, 3.00 Bathroom, 5,262 sqft  
Rural on 7.00 Acres

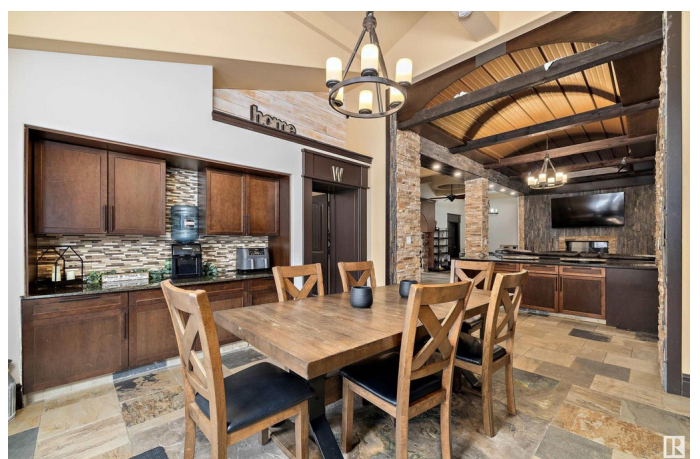
None, Rural Lac Ste. Anne County, AB

Welcome to your country dream, a timber frame bardominium, with over 5000 sq ft, on 7 acres, with an 8300 sq ft shop! Enter through the stone arch & stamped concrete elevated path. Below, detailed tile work & set up for a koi fish pond. The main floor boasts a 25' high entrance with 12' timber frame trusses, custom stonework, slate floors & stairs. The entire main floor has in-floor heat with 4 zones, 3 bdrms, one of them is complete with a walk-in closet, 4 pc ensuite with a round jacuzzi tub. Open concept entertainment area with large living room, double-sided fireplace, kitchen with huge granite island, custom 8ft high cabinets an 12'ceilings. Games room with wet bar attached. 2 additional bonus rooms, laundry and 5 pc bath also on main. Retreat to your 1100 sqft primary bdrm with 2 W/I closets, 5 pc ensuite including elevated jacuzzi tub, & its own laundry! Home has attached double tandem garage on one side, single on the other. Shop offers heated workspace w/tons of room for your toys or business!

Built in 1997

## **Essential Information**

MLS® #	E4430577
Price	\$925,000



Bedrooms	3
Bathrooms	3.00
Full Baths	3
Square Footage	5,262
Acres	7.00
Year Built	1997
Type	Rural
Sub-Type	Detached Single Family
Style	2 Storey
Status	Active

### Community Information

Address	53510 Range Road 20
Area	Rural Lac Ste. Anne County
Subdivision	None
City	Rural Lac Ste. Anne County
County	ALBERTA
Province	AB
Postal Code	T0E 2P0

### Amenities

Features	Air Conditioner, Bar, Closet Organizers, Deck, Detectors Smoke, Fire Pit, Gazebo, Guest Suite, Hot Tub, Insulation-Upgraded, Wet Bar, Workshop
----------	--

### Interior

Interior Features	ensuite bathroom
Heating	In Floor Heat System, Natural Gas
Stories	2
Has Basement	Yes
Basement	None, No Basement

### Exterior

Exterior	Wood
Exterior Features	Backs Onto Park/Trees, Fenced, Landscaped, Private Setting, Treed Lot
Construction	Wood
Foundation	Piling

### Additional Information

Date Listed April 11th, 2025

Days on Market 159

Zoning Zone 90

DATA IS DEEMED RELIABLE BUT IS NOT GUARANTEED ACCURATE BY THE REALTORS® ASSOCIATION OF EDMONTON. COPYRIGHT 2025 BY THE REALTORS® ASSOCIATION OF EDMONTON. ALL RIGHTS RESERVED. Trademarks are owned or controlled by the Canadian Real Estate Association (CREA) and identify real estate professionals who are members of CREA (REALTOR®, REALTORS®) and/or the quality of services they provide (MLS®, Multiple Listing Service®)

Listing information last updated on September 17th, 2025 at 5:32pm MDT