

## \$249,900 - 2602 10238 103 Street, Edmonton

MLS® #E4429895

**\$249,900**

2 Bedroom, 1.00 Bathroom, 578 sqft

Condo / Townhouse on 0.00 Acres

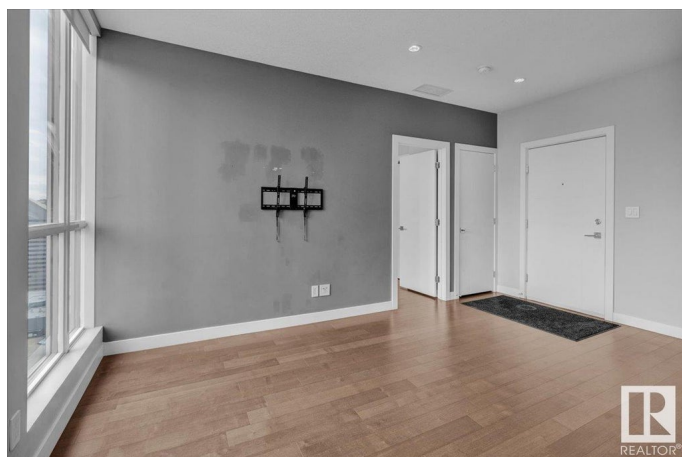
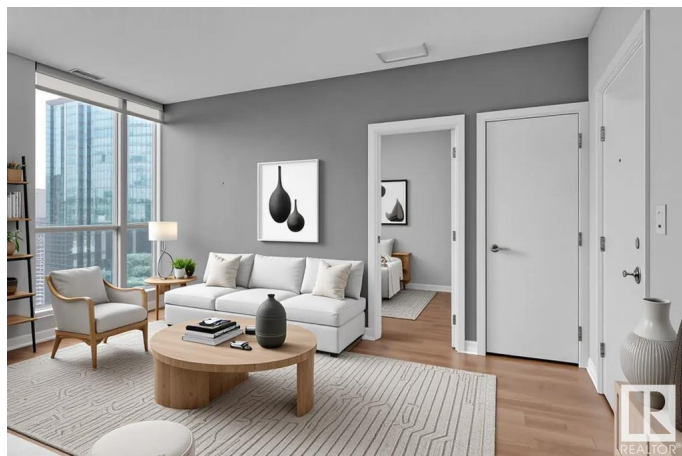
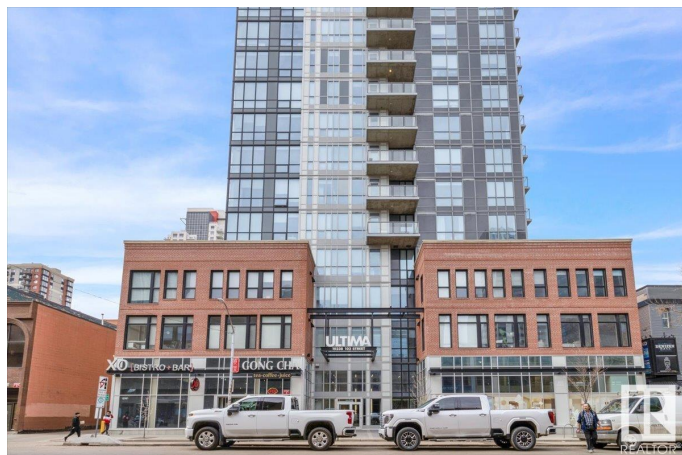
Downtown (Edmonton), Edmonton, AB

LUXURY 2 bedroom condo, located in the heart of Edmontons ICE District! Welcome to The Ultima. One of downtown Edmontons premier luxury buildings. With LOW CONDO FEES & lots of building amenities (a fitness centre, hot tub, outdoor patio, and a social room), youâ€™re sure to be impressed. The floor to ceiling windows along the back give you a breathtaking view of downtown Edmonton & loads of natural light. The kitchen has quartz countertops, stainless steel appliances & glossy black cabinetry. Both bedrooms are on OPPOSITE sides of the unit. Perfect for kids or a roommate. Other features include, hardwood flooring, A/C, your own private patio, a titled parking stall, in-suite laundry, & MORE! Located directly across from Rogers place, Loblaws City Market, Bar Henry & only steps away from 104 street, you are walking distance to everything you could need. IMMEDIATE POSSESSION AVAILABLE.

Built in 2016

### Essential Information

MLS® #	E4429895
Price	\$249,900
Bedrooms	2
Bathrooms	1.00



Full Baths	1
Square Footage	578
Acres	0.00
Year Built	2016
Type	Condo / Townhouse
Sub-Type	Apartment High Rise
Style	Single Level Apartment
Status	Active

### Community Information

Address	2602 10238 103 Street
Area	Edmonton
Subdivision	Downtown (Edmonton)
City	Edmonton
County	ALBERTA
Province	AB
Postal Code	T5J 0G6

### Amenities

Amenities	Air Conditioner, Hot Tub, Patio, Social Rooms, See Remarks
Parking Spaces	1
Parking	Underground

### Interior

Appliances	Dishwasher-Built-In, Dryer, Microwave Hood Fan, Refrigerator, Stove-Electric, Washer, Window Coverings, TV Wall Mount
Heating	Forced Air-1, Natural Gas
# of Stories	30
Stories	1
Has Basement	Yes
Basement	None, No Basement

### Exterior

Exterior	Concrete, Brick, Metal
Exterior Features	Public Transportation, Shopping Nearby, View Downtown
Roof	EPDM Membrane
Construction	Concrete, Brick, Metal
Foundation	Concrete Perimeter

### Additional Information

Date Listed	April 9th, 2025
Days on Market	21
Zoning	Zone 12
Condo Fee	\$423

DATA IS DEEMED RELIABLE BUT IS NOT GUARANTEED ACCURATE BY THE REALTORS® ASSOCIATION OF EDMONTON. COPYRIGHT 2025 BY THE REALTORS® ASSOCIATION OF EDMONTON. ALL RIGHTS RESERVED. Trademarks are owned or controlled by the Canadian Real Estate Association (CREA) and identify real estate professionals who are members of CREA (REALTOR®, REALTORS®) and/or the quality of services they provide (MLS®, Multiple Listing Service®)

Listing information last updated on April 30th, 2025 at 3:47pm MDT