

\$619,999 - 809 8 Street, Rural Lac Ste. Anne County

MLS® #E4426188

\$619,999

5 Bedroom, 2.00 Bathroom, 1,535 sqft

Rural on 0.20 Acres

Ross Haven, Rural Lac Ste. Anne County, AB

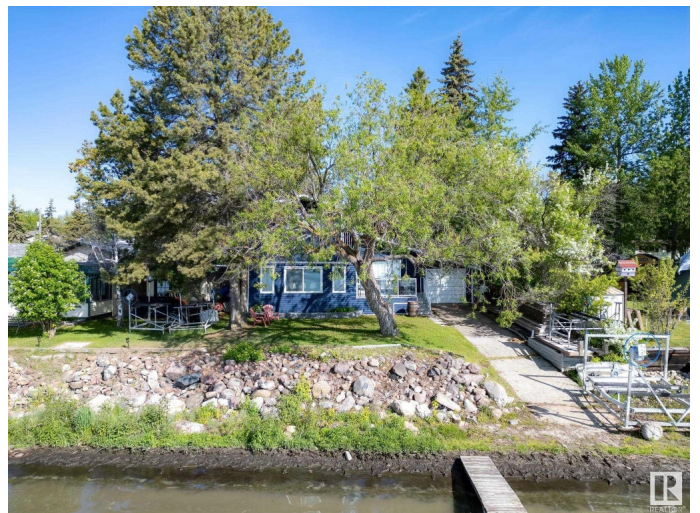
Experience the ultimate lakefront lifestyle in the charming community of Ross Haven, nestled along the shores of Lac Ste. Anne. This fully renovated 5-bed, 2-bath 1,535 sq ft home features a chef-inspired kitchen with a gas range and high-end stainless steel built-in appliances—perfect for cooking and entertaining. The open-concept main floor is flooded with natural light and offers breathtaking south-facing lake views, a spacious dining room, and 3 bedrooms. Upstairs, you'll find a bonus room, an additional bedroom, and the primary bedroom with an ensuite, providing the perfect retreat. With a double detached garage, a pull-through single attached garage, and a concrete launch ramp, there's plenty of space for vehicles and watercraft. Recent upgrades include a high-efficiency furnace, new shingles, an on-demand water heater, and a tie-in to the Ross Haven sewer system. Just 40 minutes from St. Albert and West Edmonton, this home offers the perfect blend of lakeside living and a lucrative Airbnb investment.

Built in 1975

Essential Information

MLS® # E4426188

Price \$619,999



Bedrooms	5
Bathrooms	2.00
Full Baths	2
Square Footage	1,535
Acres	0.20
Year Built	1975
Type	Rural
Sub-Type	Detached Single Family
Style	2 Storey
Status	Active

Community Information

Address	809 8 Street
Area	Rural Lac Ste. Anne County
Subdivision	Ross Haven
City	Rural Lac Ste. Anne County
County	ALBERTA
Province	AB
Postal Code	T0E 1A0

Amenities

Features	Deck, Fire Pit, Hot Water Tankless, Lake Privileges, Parking-Extra, Parking-Plug-Ins
----------	--

Interior

Interior Features	ensuite bathroom
Heating	Forced Air-1, Natural Gas
Fireplace	Yes
Stories	2
Has Basement	Yes
Basement	None, No Basement

Exterior

Exterior	Wood
Exterior Features	Backs Onto Lake, Beach Access, Lake Access Property, Lake View, Landscaped, Playground Nearby, Waterfront Property
Construction	Wood
Foundation	Concrete Perimeter

Additional Information

Date Listed March 18th, 2025

Days on Market 115

Zoning Zone 71

DATA IS DEEMED RELIABLE BUT IS NOT GUARANTEED ACCURATE BY THE REALTORS® ASSOCIATION OF EDMONTON. COPYRIGHT 2025 BY THE REALTORS® ASSOCIATION OF EDMONTON. ALL RIGHTS RESERVED. Trademarks are owned or controlled by the Canadian Real Estate Association (CREA) and identify real estate professionals who are members of CREA (REALTOR®, REALTORS®) and/or the quality of services they provide (MLS®, Multiple Listing Service®)

Listing information last updated on July 11th, 2025 at 12:47pm MDT