

## \$210,000 - 1622 Millwoods Road, Edmonton

MLS® #E4424540

**\$210,000**

3 Bedroom, 1.50 Bathroom, 1,115 sqft  
Condo / Townhouse on 0.00 Acres

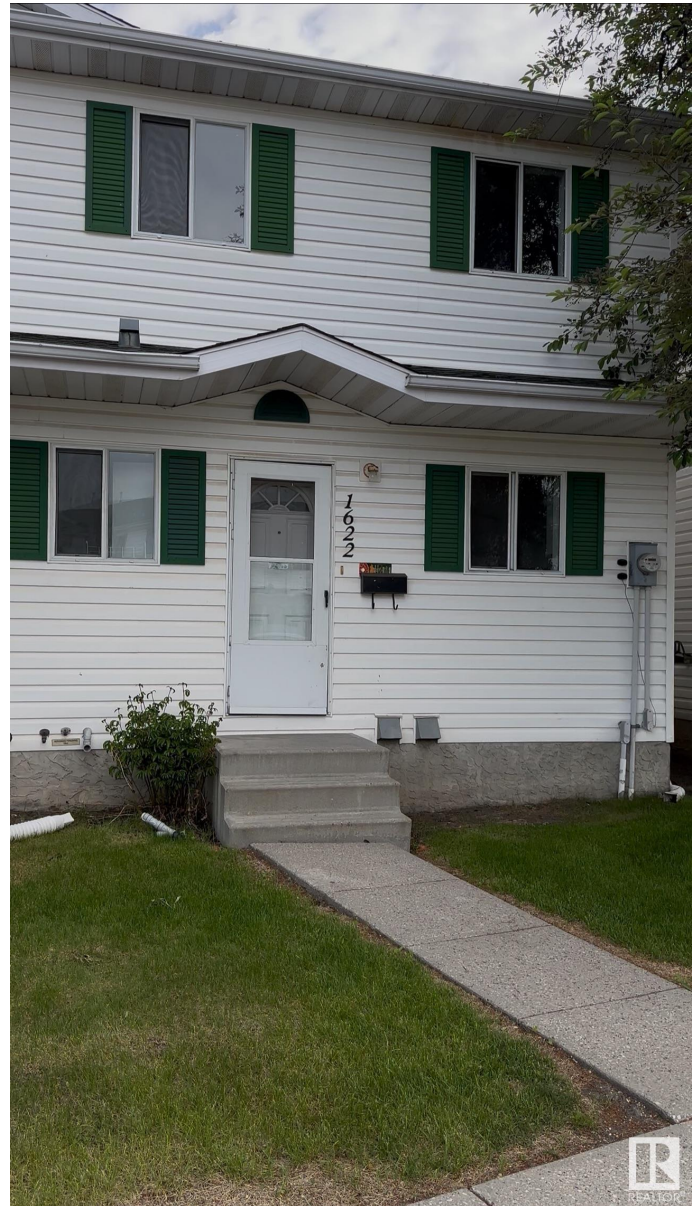
Pollard Meadows, Edmonton, AB

his delightful 3-bedroom, 2-bathroom, two-storey townhouse is packed with potential and just waiting for your personal touch! Whether you're a first-time buyer ready to dive into homeownership or an investor looking for a gem to polish, this home is full of possibilities. Step inside to a bright and airy living space that welcomes you with open arms. The cozy dining area is perfect for family meals or game nights, while the functional kitchen is just waiting for your creative flair. Upstairs, youâ€™ll find three spacious bedroomsâ€”ideal for a growing family, a dreamy home office, or a cozy guest retreat. With a bathroom on each floor, convenience is built right in! Parking is right outside your door, and the location is unbeatableâ€”close to main roads, transit, schools, parks, shopping, and all the dining spots you love. This home has great bones and endless potentialâ€”donâ€™t miss your chance to make it yours!

Built in 1993

### Essential Information

MLS® #	E4424540
Price	\$210,000
Bedrooms	3
Bathrooms	1.50



Full Baths	1
Half Baths	1
Square Footage	1,115
Acres	0.00
Year Built	1993
Type	Condo / Townhouse
Sub-Type	Townhouse
Style	2 Storey
Status	Active

### Community Information

Address	1622 Millwoods Road
Area	Edmonton
Subdivision	Pollard Meadows
City	Edmonton
County	ALBERTA
Province	AB
Postal Code	T6L 6W4

### Amenities

Amenities	Detectors Smoke, Hot Water Natural Gas
Parking	2 Outdoor Stalls, No Garage

### Interior

Appliances	Dishwasher-Built-In, Dryer, Furniture Included, Refrigerator, Stove-Electric, Washer
Heating	Forced Air-1, Natural Gas
Stories	3
Has Basement	Yes
Basement	Full, Finished

### Exterior

Exterior	Wood, Vinyl
Exterior Features	Airport Nearby, Flat Site, Golf Nearby, Low Maintenance Landscape, Picnic Area, Playground Nearby, Public Swimming Pool, Public Transportation, Schools, Shopping Nearby
Roof	Asphalt Shingles
Construction	Wood, Vinyl
Foundation	Concrete Perimeter

## Additional Information

Date Listed	March 7th, 2025
Days on Market	101
Zoning	Zone 29
Condo Fee	\$200



DATA IS DEEMED RELIABLE BUT IS NOT GUARANTEED ACCURATE BY THE REALTORS® ASSOCIATION OF EDMONTON. COPYRIGHT 2025 BY THE REALTORS® ASSOCIATION OF EDMONTON. ALL RIGHTS RESERVED. Trademarks are owned or controlled by the Canadian Real Estate Association (CREA) and identify real estate professionals who are members of CREA (REALTOR®, REALTORS®) and/or the quality of services they provide (MLS®, Multiple Listing Service®)

Listing information last updated on June 16th, 2025 at 6:47pm MDT