

\$169,900 - 2 4418 Hwy 633, Rural Lac Ste. Anne County

MLS® #E4424531

\$169,900

1 Bedroom, 0.00 Bathroom, 394 sqft

Rural on 0.49 Acres

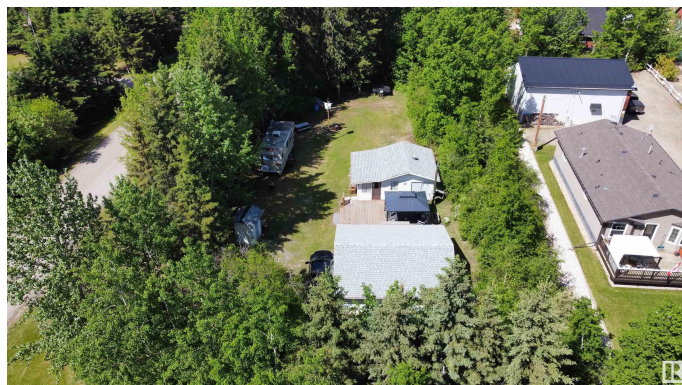
Birchwood Estates, Rural Lac Ste. Anne County, AB

Perfect weekend getaway property! Fully treed half acre lot with a charming one room cabin with sun room and massive double car garage (26'x24') with cement floor. Large deck (27'x16') with gazebo and outdoor kitchen area. 100 Amp electrical service. Plenty of space for guest to bring their camping trailers. 1200 gallon outhouse is conveniently located. Comes with most of the furniture and a newer John Deere ride on lawn mower. Newer shingles (2018). Cistern is 400 Gallons and water access is close in Darwell (5 mins) which offers free water. Walking distance to boat launch, dock and community area with basketball court. Many trails lead to Crown Land with miles and miles of additional trails that go all the way to Alberta Beach. An ATV riders heaven!

Built in 1996

Essential Information

| | |
|----------------|-----------|
| MLS® # | E4424531 |
| Price | \$169,900 |
| Bedrooms | 1 |
| Bathrooms | 0.00 |
| Square Footage | 394 |
| Acres | 0.49 |
| Year Built | 1996 |



| | |
|----------|------------------------|
| Type | Rural |
| Sub-Type | Detached Single Family |
| Style | Bungalow |
| Status | Active |

Community Information

| | |
|-------------|----------------------------|
| Address | 2 4418 Hwy 633 |
| Area | Rural Lac Ste. Anne County |
| Subdivision | Birchwood Estates |
| City | Rural Lac Ste. Anne County |
| County | ALBERTA |
| Province | AB |
| Postal Code | T0E 0L0 |

Amenities

| | |
|----------|--|
| Features | Deck, Fire Pit, Front Porch, Parking-Extra, R.V. Storage |
|----------|--|

Interior

| | |
|--------------|---------------------|
| Heating | Baseboard, Electric |
| Stories | 1 |
| Has Basement | Yes |
| Basement | None, No Basement |

Exterior

| | |
|-------------------|---|
| Exterior | Wood |
| Exterior Features | Beach Access, Boating, Corner Lot, Flat Site, Golf Nearby, Lake Access Property, Level Land, Private Setting, Schools |
| Construction | Wood |
| Foundation | Concrete Perimeter |

Additional Information

| | |
|----------------|-----------------|
| Date Listed | March 6th, 2025 |
| Days on Market | 56 |
| Zoning | Zone 71 |

DATA IS DEEMED RELIABLE BUT IS NOT GUARANTEED ACCURATE BY THE REALTORS® ASSOCIATION OF EDMONTON. COPYRIGHT 2025 BY THE REALTORS® ASSOCIATION OF EDMONTON. ALL RIGHTS RESERVED. Trademarks are owned or controlled by the Canadian Real Estate Association (CREA) and identify real estate professionals who are members of CREA (REALTOR®, REALTORS®) and/or the quality of services they provide (MLS®, Multiple Listing Service®)

Listing information last updated on April 30th, 2025 at 10:17pm MDT