

# **\$199,900 - 21 53207 Hghway 31, Rural Parkland County**

MLS® #E4424486

**\$199,900**

1 Bedroom, 1.00 Bathroom, 542 sqft

Rural on 0.09 Acres

The Meadows (Parkland), Rural Parkland County, AB

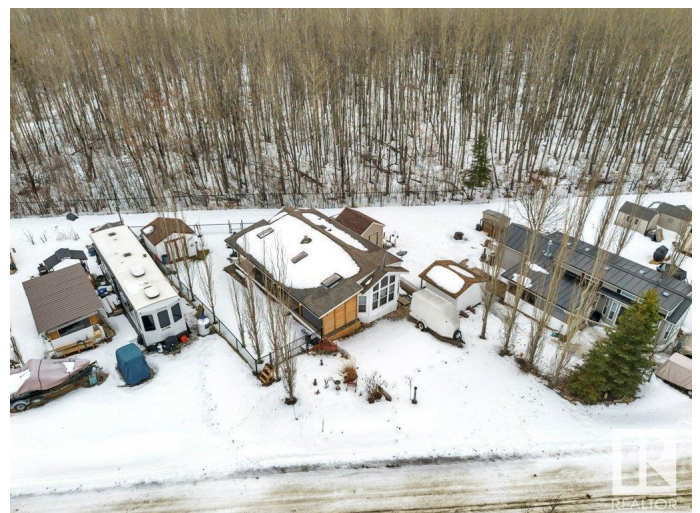
Your Dream Getaway Awaits!! Now's your chance to own a stunning, fully serviced 4-season park model in the gated community of The Meadows at Pineridge Golf Resort, just 45 minutes west of Edmonton and 2 minutes north of Seba Beach! This 1 bed & 1 bath 542 sq ft home boasts many features such as being fully fenced for privacy, municipal water, A/C, an electric fireplace and fully covered deck to enjoy those hot summer nights. PLUS amazing resort amenities including a rec center w/ gym & shower room, big screen TV, air hockey, ping pong, 12 hole golf course, tennis & pickleball courts, basketball, horseshoe pits, playgrounds and walking trails all just steps from your front door. This property offers a rare combination of comfort, recreation, and nature. With low taxes and affordable condo fees (bare land condo), youâ€™™ll be living the dream without the stress. Donâ€™™t miss out on this incredible opportunity to own your very own slice of paradise. Beat the rush and make this beautiful retreat your own!

Built in 2012

## **Essential Information**

MLS® # E4424486

Price \$199,900



|                |                      |
|----------------|----------------------|
| Bedrooms       | 1                    |
| Bathrooms      | 1.00                 |
| Full Baths     | 1                    |
| Square Footage | 542                  |
| Acres          | 0.09                 |
| Year Built     | 2012                 |
| Type           | Rural                |
| Sub-Type       | Detached Condominium |
| Style          | Bungalow             |
| Status         | Active               |

### Community Information

|             |                        |
|-------------|------------------------|
| Address     | 21 53207 Hghway 31     |
| Area        | Rural Parkland County  |
| Subdivision | The Meadows (Parkland) |
| City        | Rural Parkland County  |
| County      | ALBERTA                |
| Province    | AB                     |
| Postal Code | T0E 2B0                |

### Amenities

|          |  |
|----------|--|
| Features | Ceiling 9 ft., Deck, Fire Pit, No Smoking Home, Party Room, Racquet Courts, Vaulted Ceiling, Vinyl Windows |
|----------|--|

### Interior

|              |                           |
|--------------|---------------------------|
| Heating      | Forced Air-1, Natural Gas |
| Stories      | 1                         |
| Has Basement | Yes                       |
| Basement     | None, No Basement         |

### Exterior

|                   |   |
|-------------------|---|
| Exterior          | Wood  |
| Exterior Features | Backs Onto Park/Trees, Fenced, Golf Nearby, Landscaped, No Back Lane, No Through Road, Picnic Area, Playground Nearby |
| Construction      | Wood  |
| Foundation        | Piling  |

### Additional Information

|             |                 |
|-------------|-----------------|
| Date Listed | March 7th, 2025 |
|-------------|-----------------|

|                |         |
|----------------|---------|
| Days on Market | 56      |
| Zoning         | Zone 90 |
| Condo Fee      | \$163   |

DATA IS DEEMED RELIABLE BUT IS NOT GUARANTEED ACCURATE BY THE REALTORS® ASSOCIATION OF EDMONTON. COPYRIGHT 2025 BY THE REALTORS® ASSOCIATION OF EDMONTON. ALL RIGHTS RESERVED. Trademarks are owned or controlled by the Canadian Real Estate Association (CREA) and identify real estate professionals who are members of CREA (REALTOR®, REALTORS®) and/or the quality of services they provide (MLS®, Multiple Listing Service®)

Listing information last updated on May 2nd, 2025 at 1:02am MDT