

\$45,150

0 Bedroom, 0.00 Bathroom,
Single Family on 0.00 Acres

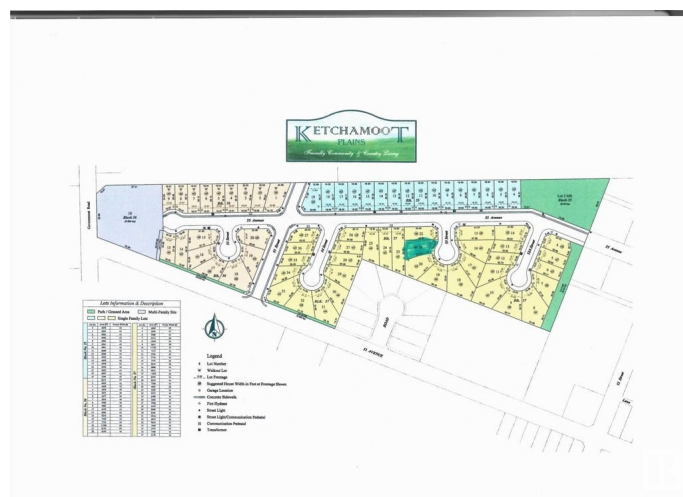
Tofield, Tofield, AB

7508 sq/ft, fully serviced lot with a 46ft pocket width. Residential Tax Incentive associated with this lot! Several other lots available with similar size and price.



Essential Information

| | |
|-----------|-----------------|
| MLS® # | E4424427 |
| Price | \$45,150 |
| Bathrooms | 0.00 |
| Acres | 0.00 |
| Type | Single Family |
| Sub-Type | Vacant Lot/Land |
| Status | Active |



Community Information

| | |
|-------------|----------------|
| Address | 5415 53 Street |
| Area | Tofield |
| Subdivision | Tofield |
| City | Tofield |
| County | ALBERTA |
| Province | AB |
| Postal Code | T0B 4J0 |

Exterior

Exterior Features Flat Site, No Back Lane

Additional Information

Date Listed March 6th, 2025

Days on Market 60

Zoning Zone 80

DATA IS DEEMED RELIABLE BUT IS NOT GUARANTEED ACCURATE BY THE REALTORS® ASSOCIATION OF EDMONTON. COPYRIGHT 2025 BY THE REALTORS® ASSOCIATION OF EDMONTON. ALL RIGHTS RESERVED. Trademarks are owned or controlled by the Canadian Real Estate Association (CREA) and identify real estate professionals who are members of CREA (REALTOR®, REALTORS®) and/or the quality of services they provide (MLS®, Multiple Listing Service®)

Listing information last updated on May 4th, 2025 at 11:32pm MDT