

\$987,000 - 44 26106 Twp Road 532 A, Rural Parkland County

MLS® #E4422386

\$987,000

4 Bedroom, 3.00 Bathroom, 1,873 sqft

Rural on 0.55 Acres

Helenslea Heath, Rural Parkland County, AB

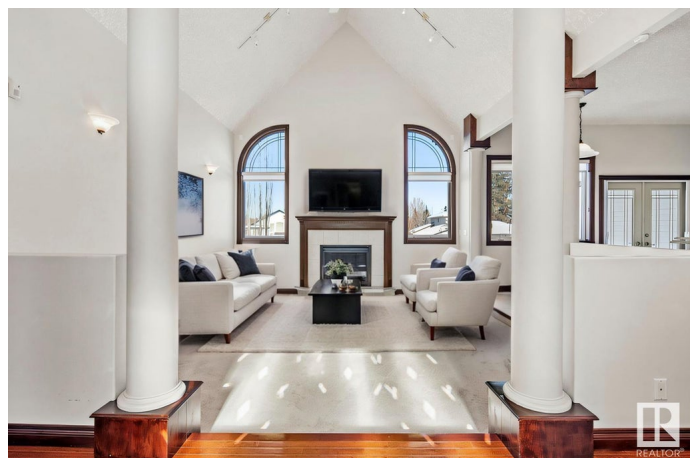
Stunning 30-foot cathedral ceilings and numerous windows provide loads of natural light in every room of this 4-bedroom walk-out bungalow. This elegant country estate is surrounded by gorgeous landscaping and located just steps from Edmonton and Big Lake. A large open kitchen with granite counters overlooks the central great room with gas fireplace. Entertain guests in your formal dining room or outside on a spectacular 650 sq. ft. deck with panoramic views of a park like backyard. The master bedroom offers a fantastic ensuite bathroom with jetted tub, separate shower and large walk-in closet. The fully finished walkout level with tiled in-floor heating boasts a large family room, a 4th bedroom with walk in closet, a separate bathroom with steam shower and ample storage rooms, and a massive, covered patio. This air-conditioned home also offers an oversized heated double attached garage and an oversized heated double detached garage (28x26) with an enormous driveway. A school bus stops in front of home.

Built in 1999

Essential Information

MLS® #

E4422386



Price	\$987,000
Bedrooms	4
Bathrooms	3.00
Full Baths	3
Square Footage	1,873
Acres	0.55
Year Built	1999
Type	Rural
Sub-Type	Detached Single Family
Style	Bungalow
Status	Active

Community Information

Address	44 26106 Twp Road 532 A
Area	Rural Parkland County
Subdivision	Helenslea Heath
City	Rural Parkland County
County	ALBERTA
Province	AB
Postal Code	T7Y 1A3

Amenities

Features	Air Conditioner, Closet Organizers, Deck, No Animal Home, Sauna; Swirlpool; Steam, Sprinkler System-Fire, Vaulted Ceiling, Walkout Basement
----------	---

Interior

Interior Features	ensuite bathroom
Heating	Forced Air-1, In Floor Heat System, Natural Gas
Stories	2
Has Basement	Yes
Basement	Full, Finished

Exterior

Exterior	Wood
Exterior Features	Fenced, Flat Site, Fruit Trees/Shrubs, Golf Nearby, Landscaped, Schools, Shopping Nearby
Construction	Wood
Foundation	Concrete Perimeter

Additional Information

Date Listed February 21st, 2025
Days on Market 69
Zoning Zone 70

DATA IS DEEMED RELIABLE BUT IS NOT GUARANTEED ACCURATE BY THE REALTORS® ASSOCIATION OF EDMONTON. COPYRIGHT 2025 BY THE REALTORS® ASSOCIATION OF EDMONTON. ALL RIGHTS RESERVED.Trademarks are owned or controlled by the Canadian Real Estate Association (CREA) and identify real estate professionals who are members of CREA (REALTOR®, REALTORS®) and/or the quality of services they provide (MLS®, Multiple Listing Service®)
Listing information last updated on May 1st, 2025 at 12:17am MDT