

# \$339,900 - N/A, Edmonton

MLS® #E4417928

**\$339,900**

1 Bedroom, 1.00 Bathroom, 515 sqft  
Condo / Townhouse on 0.00 Acres

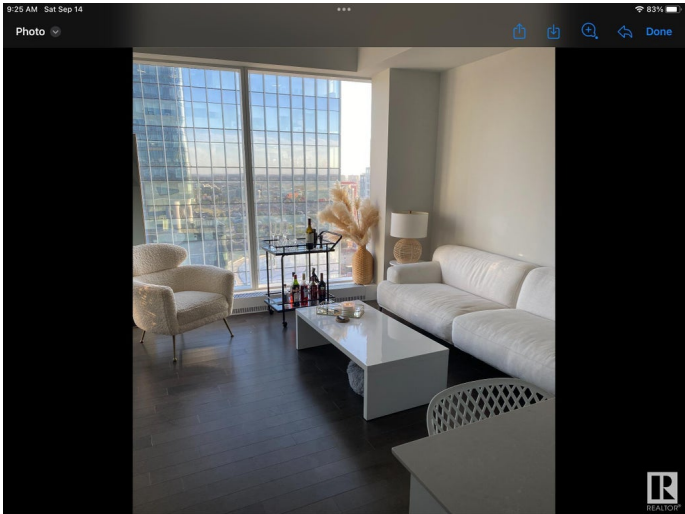
Downtown (Edmonton), Edmonton, AB

One of the nicest layouts with WIDER Living Room Space One titled underground Parking Stall. Enjoy a condo lifestyle with all the first class amenities above the J.W. MARRIOT HOTEL. Enjoy unlimited access to ARCHETYPE Body by Bennet GYM, Indoor swimming pool, Hot Tub , Steam room and Yoga, Spin and boxing classes. Amenities like BILLIARDS Lounge, PET WALK AREA, OUT DOOR PATIO AND BBQ ,ROOFTOP DECK, CONFERENCE ROOM. 24/7 CONCIERGE SERVICE. PEDWAY system direct access to LRT ,Grocery Market ,restaurants and more. The LEGENDS PRIVATE RESIDENCE IN THE ICE DISTRICT a great place to call home.

Built in 2019

## Essential Information

MLS® #	E4417928
Price	\$339,900
Bedrooms	1
Bathrooms	1.00
Full Baths	1
Square Footage	515
Acres	0.00
Year Built	2019
Type	Condo / Townhouse



Sub-Type	Apartment High Rise
Style	Single Level Apartment
Status	Active

### Community Information

Address	N/A
Area	Edmonton
Subdivision	Downtown (Edmonton)
City	Edmonton
County	ALBERTA
Province	AB
Postal Code	T5J 0K6

### Amenities

Amenities	Intercom, Parking-Visitor, Security Door, Social Rooms, Concierge Service, Rooftop Deck/Patio
Parking Spaces	1
Parking	Underground

### Interior

Appliances	Air Conditioning-Central, Dishwasher-Built-In, Garage Opener, Hood Fan, Oven-Built-In, Oven-Microwave, Refrigerator, Stacked Washer/Dryer, Stove-Countertop Electric
Heating	Fan Coil, Natural Gas
# of Stories	54
Stories	1
Has Basement	Yes
Basement	None, No Basement

### Exterior

Exterior	Concrete, Metal
Exterior Features	Golf Nearby, Shopping Nearby, View Downtown
Roof	EPDM Membrane
Construction	Concrete, Metal
Foundation	Concrete Perimeter

### Additional Information

Date Listed	January 13th, 2025
Days on Market	108
Zoning	Zone 12

Condo Fee                      \$680



DATA IS DEEMED RELIABLE BUT IS NOT GUARANTEED ACCURATE BY THE REALTORS® ASSOCIATION OF EDMONTON. COPYRIGHT 2025 BY THE REALTORS® ASSOCIATION OF EDMONTON. ALL RIGHTS RESERVED.Trademarks are owned or controlled by the Canadian Real Estate Association (CREA) and identify real estate professionals who are members of CREA (REALTOR®, REALTORS®) and/or the quality of services they provide (MLS®, Multiple Listing Service®)

Listing information last updated on May 1st, 2025 at 1:02am MDT