

Courtesy Of Kevin Klein and Paul Paiva Of MaxWell Polaris

## \$499,900 - 7714 166a Avenue Nw, Edmonton

MLS® #E4308029

**\$499,900**

3 Bedroom, 2.00 Bathroom, 2,080 sqft  
Single Family on 0 Acres

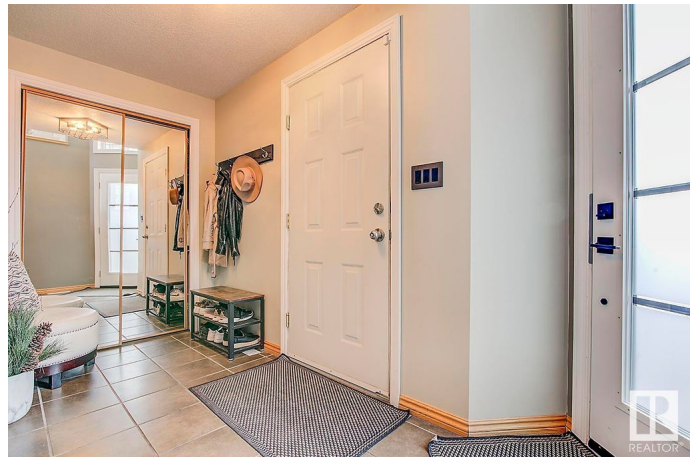
Mayliewan, Edmonton, AB

Extremely well maintained bi level in the community of Mayliewan! The large entry way leads you upstairs where you will find a formal dining area that can also be used as an office. The open concept kitchen featuring stainless steel appliances (2019 or newer) looks onto another dining area and good sized living room that has a natural gas fireplace. At roughly 12 feet, the high ceilings and crown mouldings are sure to impress. Also on the main floor is a very good sized bedroom and the 4 piece main bathroom. Upstairs there is an amazing primary bedroom featuring a custom walk in closet, 5 piece ensuite with large soaker tub and a feature wall with an electric fireplace. From there is another large bedroom that has a huge closet. The backyard is maintenance free and perfect for entertaining. This home is in a fantastic location with close access to schools, transit, shopping as well as access to the Anthony Henday and Yellowhead Trail.

Built in 2003

### Essential Information

MLS® #	E4308029
Price	\$499,900
Bedrooms	3
Bathrooms	2.00



Full Baths	2
Square Footage	2,080
Acres	0.00
Year Built	2003
Type	Single Family
Sub-Type	Residential Detached Single Family
Style	Bi-Level

### **Community Information**

Address	7714 166a Avenue Nw
Area	Edmonton
Subdivision	Mayliewan
City	Edmonton
County	ALBERTA
Province	AB
Postal Code	T5Z 3V9

### **Amenities**

Features	No Smoking Home, Deck, Detectors Smoke, Cable TV Connection
Parking	Double Garage Attached
# of Garages	2

### **Interior**

Interior	Hardwood, Carpet, Non-Ceramic Tile
Interior Features	Dishwasher-Built-In, Dryer, Garage Control, Garage Opener, Hood Fan, Refrigerator, Stove-Electric, Washer, Stove-Countertop Gas, Alarm/Security System
Heating	Forced Air-1
Bedrooms on Main Level	Y
Has Basement	Yes
Basement	Full, Unfinished
# of Stories	2

### **Exterior**

Exterior	Stucco
Exterior Features	Landscaped, Public Transportation, Schools, Shopping Nearby, See Remarks, Golf Nearby, Low Maintenance Landscape
Construction	Wood Frame
Foundation	Concrete

Listing information last updated on September 29th, 2022 at 7:01pm MDT