

\$0 - 104 Charlesworth Drive, Edmonton

MLS® #E4281845

\$0

0 Bedroom, 0.00 Bathroom,
Retail on 0.00 Acres

Charlesworth, Edmonton, AB

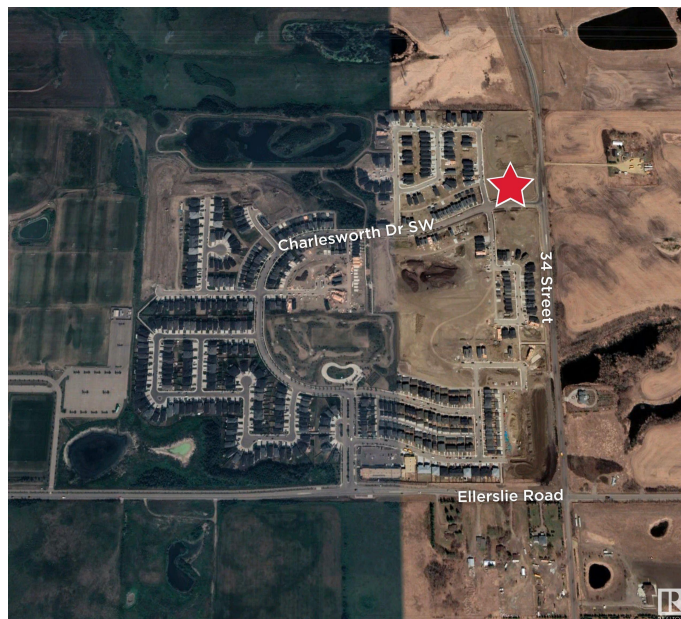
Multiple commercial Retail Units are available for pre-leasing in this rapidly developing community of Charlesworth in fast growing SW corridor of the city. The community is expanding quickly with proposed high density buildings in the surrounding of this development. This high quality development should be up for possession in Spring/Summer of 2023. We are leasing these units from \$ 32.00 PSF and, the DRIVE THRU UNITS at 35.00 PSF. A variety of businesses including: Food and Beverage Services, Personal Services, Financial and Insurance, Health Services/Medical usages (General Physician, Pharmacy, Chiro, Massage etc.), Day Care and, Out of School care, Dine in restaurant are a good fit to serve this local community. We have units available with Patio.

Built in 2022

Essential Information

MLS® #	E4281845
Bathrooms	0.00
Acres	0.00
Year Built	2022
Type	Retail
Status	Active

Community Information



Address	104 Charlesworth Drive
Area	Edmonton
Subdivision	Charlesworth
City	Edmonton
County	ALBERTA
Province	AB
Postal Code	T6X 1A5

Exterior

Exterior	Concrete, Steel Frame
Construction	Concrete, Steel Frame

Additional Information

Date Listed	March 15th, 2022
Days on Market	1142
Zoning	Zone 53

DATA IS DEEMED RELIABLE BUT IS NOT GUARANTEED ACCURATE BY THE REALTORS® ASSOCIATION OF EDMONTON. COPYRIGHT 2025 BY THE REALTORS® ASSOCIATION OF EDMONTON. ALL RIGHTS RESERVED. Trademarks are owned or controlled by the Canadian Real Estate Association (CREA) and identify real estate professionals who are members of CREA (REALTOR®, REALTORS®) and/or the quality of services they provide (MLS®, Multiple Listing Service®)

Listing information last updated on April 30th, 2025 at 9:02am MDT