

\$415,000 - Rr84 And Hwy 621, Rural Brazeau County

MLS® #E4255867

\$415,000

0 Bedroom, 0.00 Bathroom,
Rural on 150.22 Acres

None, Rural Brazeau County, AB

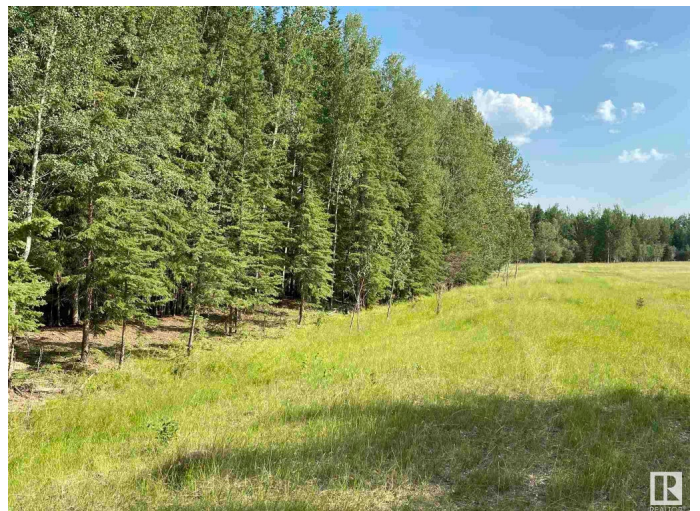
Such a beautiful 150.2 ACRES of pasture or crop land with only one subdivision taken out. SURFACE LEASE revenue \$5,850 per year with ARC. (2 Wellsite & 2 access roads). There is Potential for two more subdivisions. Open area is fenced. JUST 9 PAVED MILES FROM TOWN. LAND COULD HANDLE 40 COW/CALF PAIR or 50 acres of crop land. THERE IS ABOUT 60 ACRES OPEN.

Essential Information

MLS® #	E4255867
Price	\$415,000
Bathrooms	0.00
Acres	150.22
Type	Rural
Sub-Type	Vacant Lot/Land
Status	Active

Community Information

Address	Rr84 And Hwy 621
Area	Rural Brazeau County
Subdivision	None
City	Rural Brazeau County
County	ALBERTA
Province	AB
Postal Code	T7A 2A3



Exterior

Exterior Features Flat Site, Golf Nearby, Ski Hill Nearby

Additional Information

Date Listed July 22nd, 2021

Days on Market 1425

Zoning Zone 90

DATA IS DEEMED RELIABLE BUT IS NOT GUARANTEED ACCURATE BY THE REALTORS® ASSOCIATION OF EDMONTON. COPYRIGHT 2025 BY THE REALTORS® ASSOCIATION OF EDMONTON. ALL RIGHTS RESERVED. Trademarks are owned or controlled by the Canadian Real Estate Association (CREA) and identify real estate professionals who are members of CREA (REALTOR®, REALTORS®) and/or the quality of services they provide (MLS®, Multiple Listing Service®)

Listing information last updated on June 16th, 2025 at 4:32am MDT